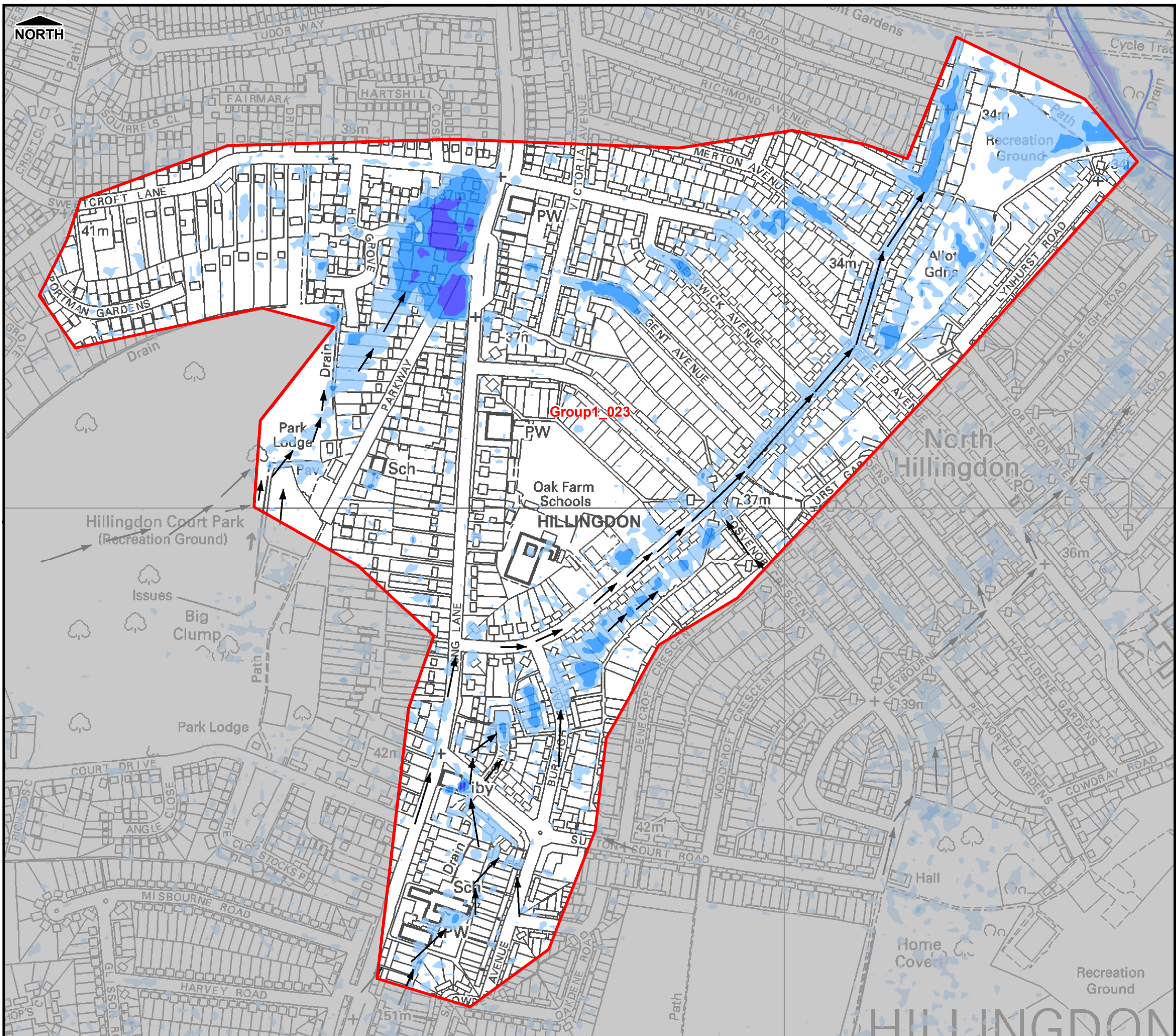


THIS DRAWING MAY BE USED ONLY FOR THE PURPOSE INTENDED



Legend

- Borough Administrative Boundary
 - Main River
 - Ordinary Watercourse
 - Permanent Water Bodies
 - Critical Drainage Area
 - Culverted Watercourse (Main River)
 - Flow Direction
- Flood Depth (m)
- | | | | |
|--|--------------|--|-------------|
| | < 0.1m | | 0.5m - 1.0m |
| | 0.1m - 0.25m | | 1.0m - 1.5m |
| | 0.25m - 0.5m | | > 1.5m |

Notes

- This map only shows the predicted likelihood of surface water flooding (this includes flooding from sewers, drains, small watercourses and ditches that occurs in heavy rainfall) for defined areas, and due to the coarse nature of the source data used, are not detailed enough to account for precise addresses.
- Users of this map should refer to section 3.2 of the Surface Water Management Plan for a complete description of limitations and accuracy of the flood/hazard extents shown.

London Borough of Hillingdon



Surface Water Management Plan

© Crown Copyright. All rights reserved. GLA (LA100032379) 2011
 Covers all data that has been supplied and distributed under license for the Drain London project.
 Digital geological data reproduced from British Geological Survey (c) NERC Licence No 2011/053A

Scale at A3 1:5,000	Date 13/04/2011	Drawn by R.MOORE	Approved by P.HLINOVSKY
-------------------------------	---------------------------	----------------------------	-----------------------------------

Critical Drainage Area 023
Surface Water Depth (m)
1 in 100 Chance of rainfall event occurring in any given year (1% AEP)

Consultants
CAPITA SYMONDS Capita Symonds
 Level Seven,
 52 Grosvenor Gardens,
 Belgravia,
 London
 SW1W 0AU

Drain London Programme Board Members

GREATERLONDONAUTHORITY

FIGURE 23

Filepath: L:\Environment\zwet\CS046913_DrainLondon_Tier2\Group1\ARC\mxd\SWMP_GP1_Hillingdon_Fig23_Depth_100_CDA023.mxd