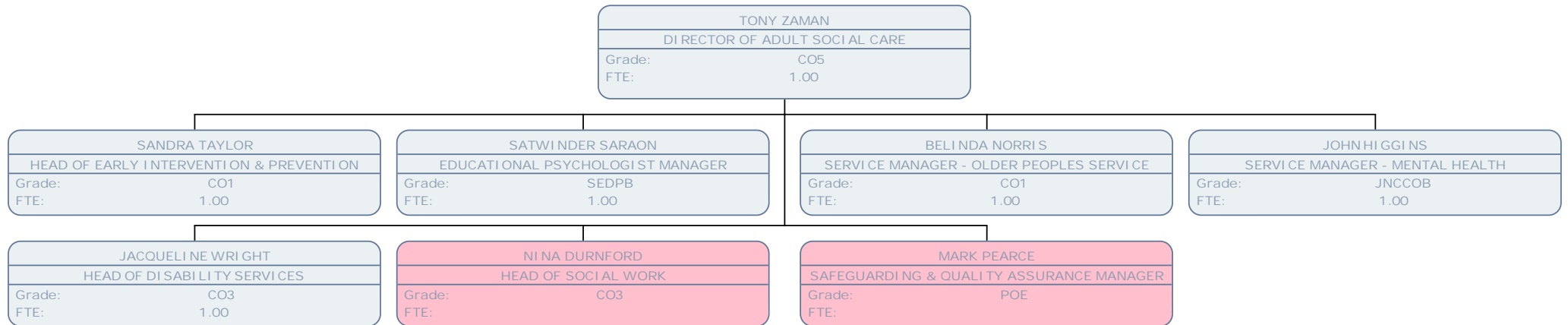
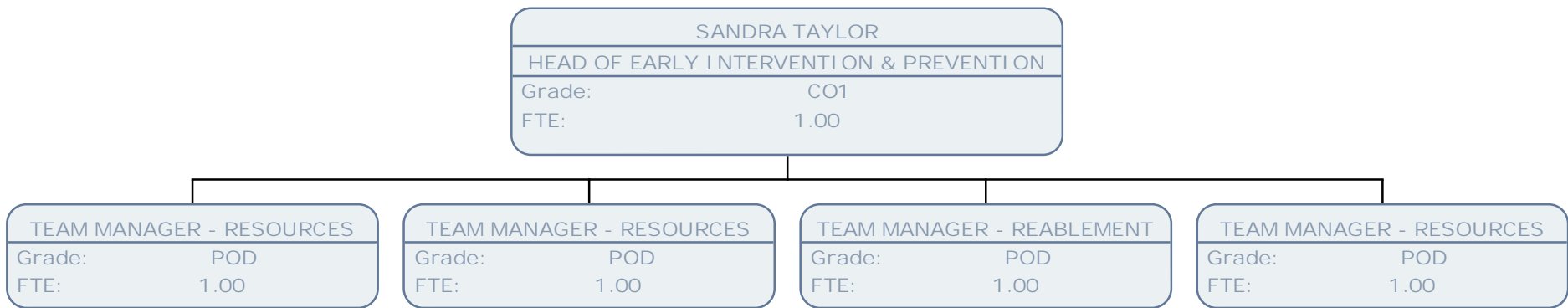
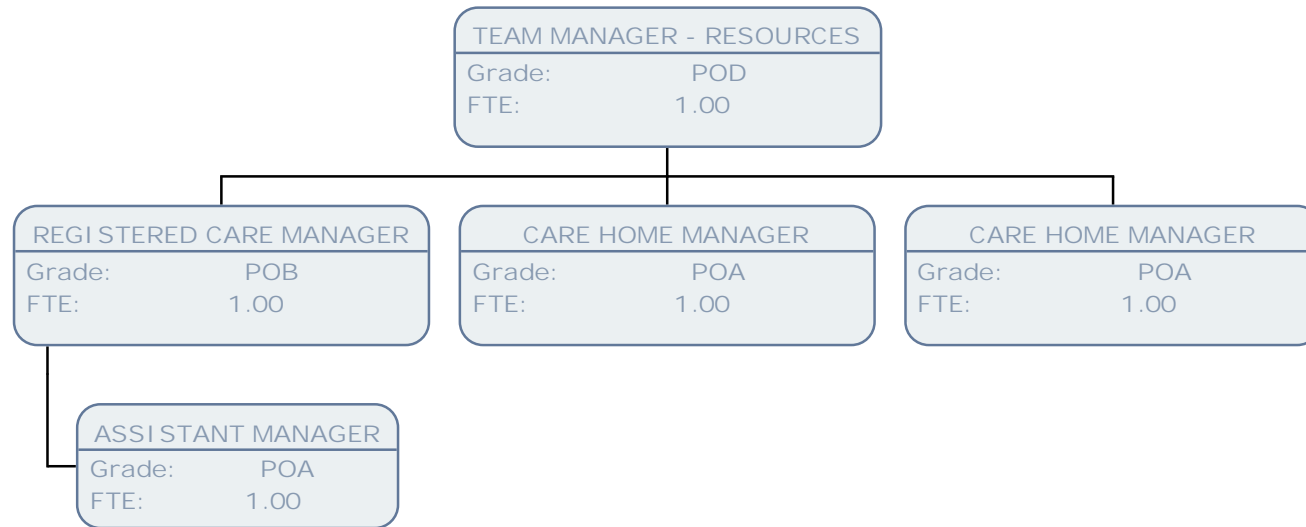


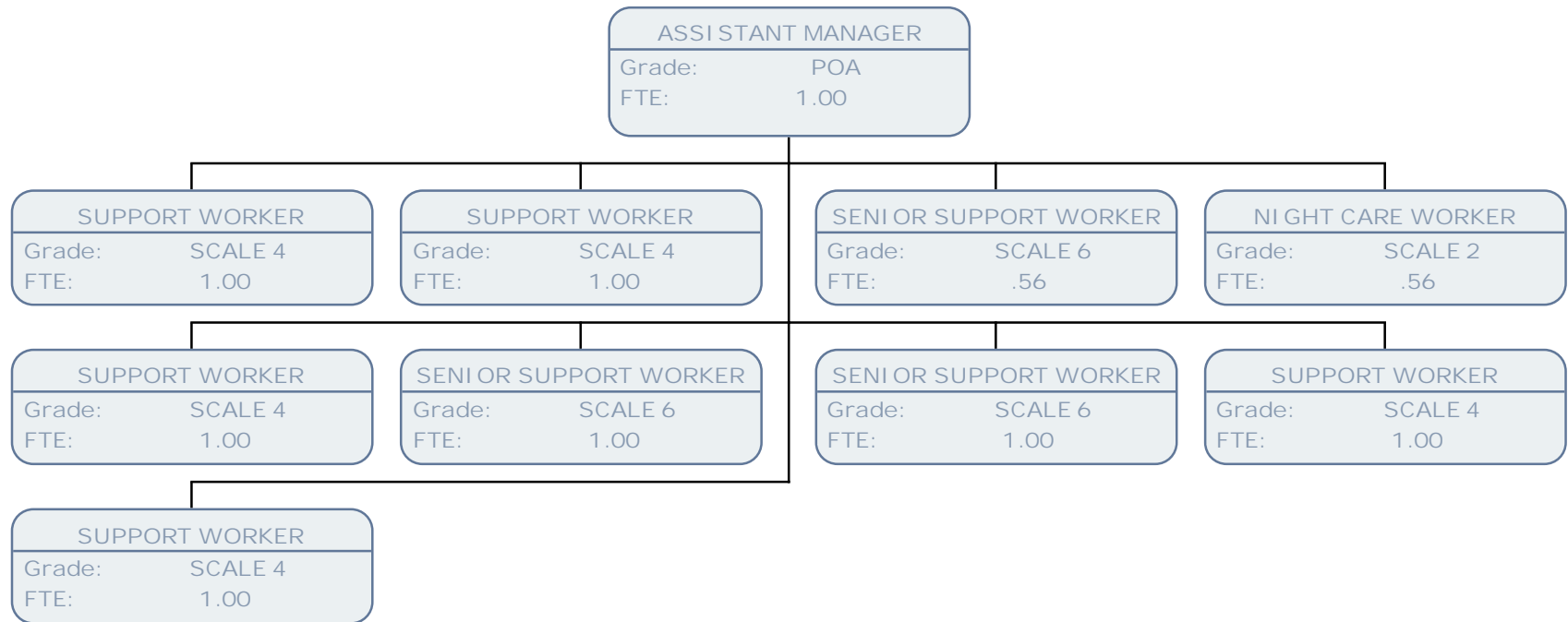
Adult Services March 14

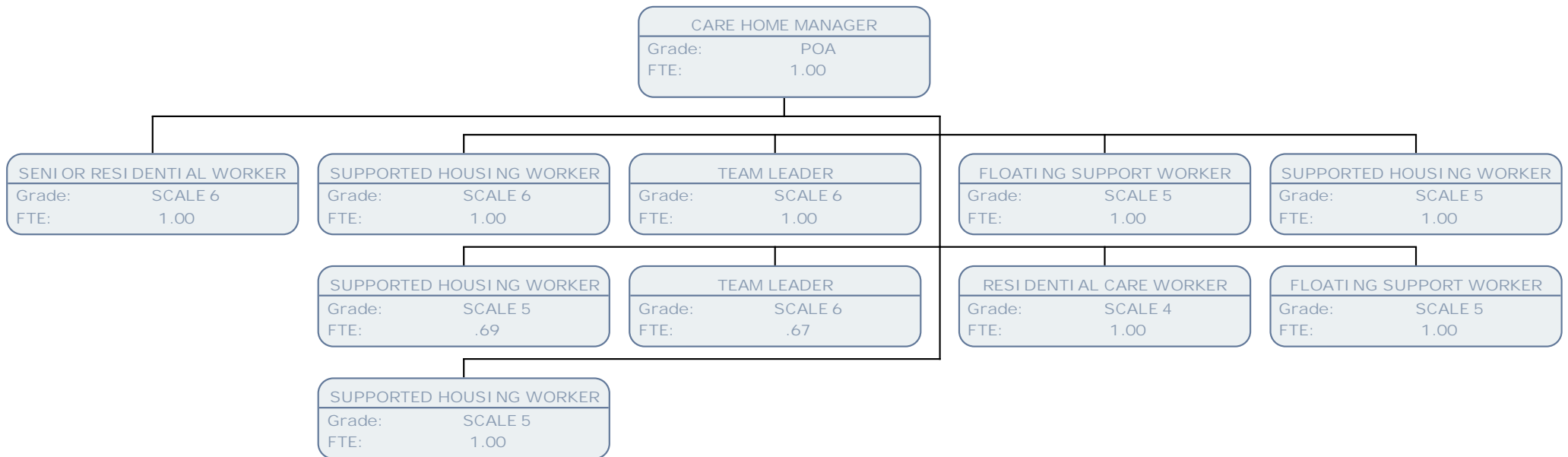
Adult Services

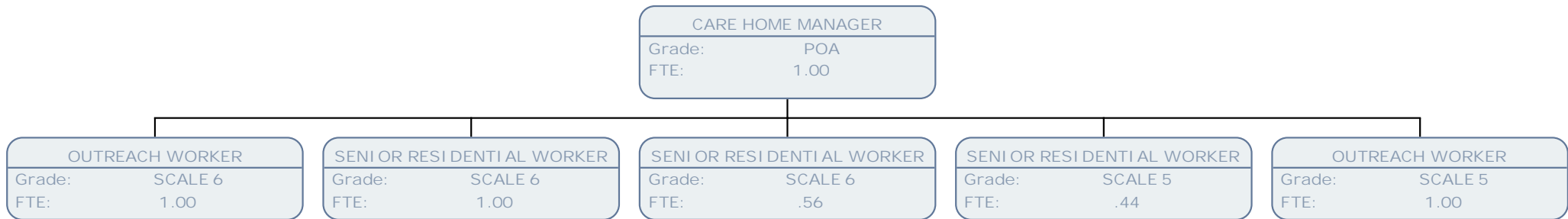


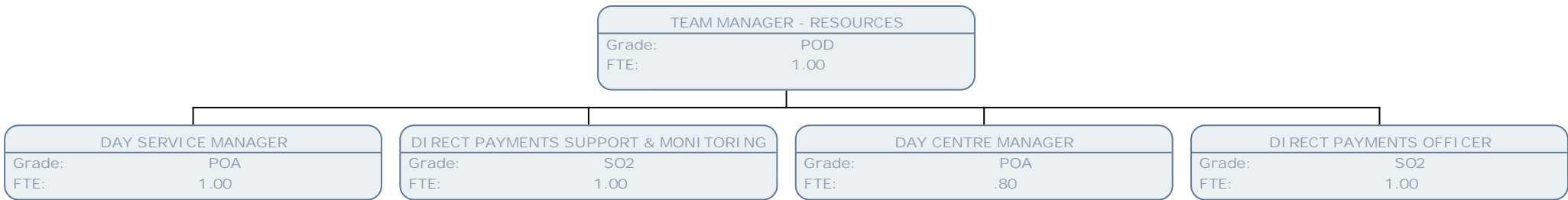


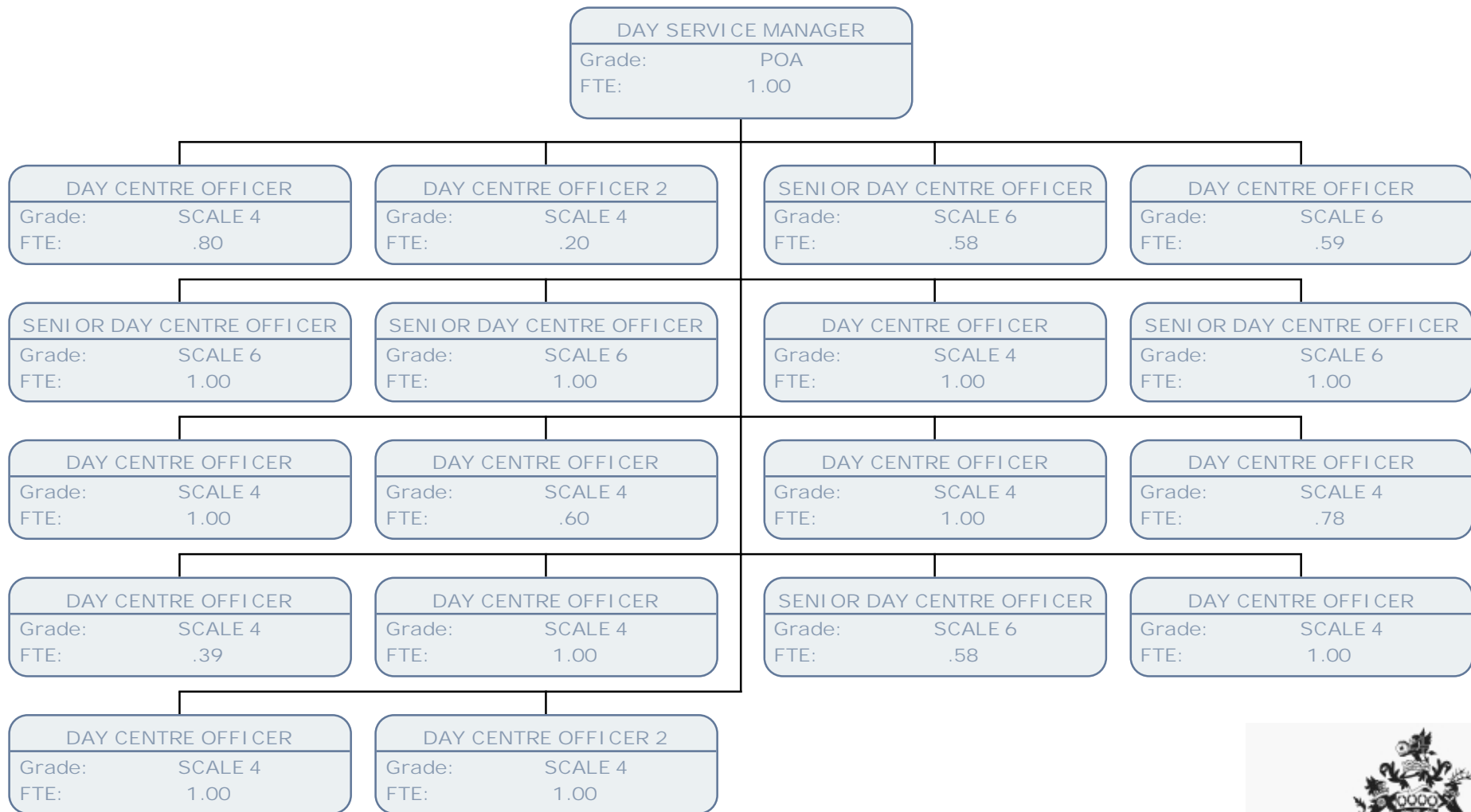


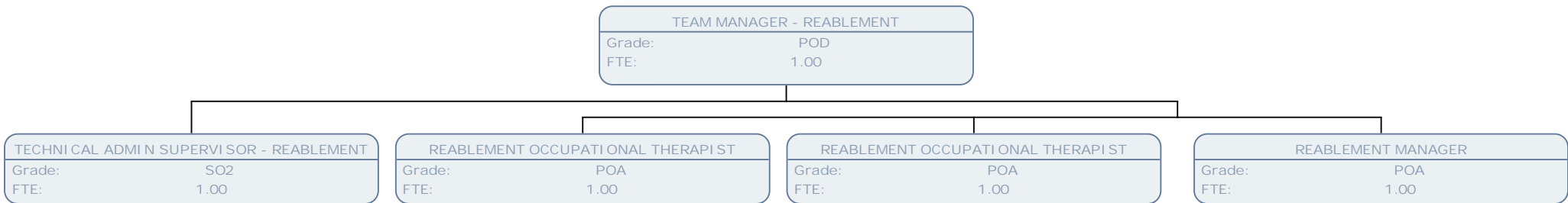


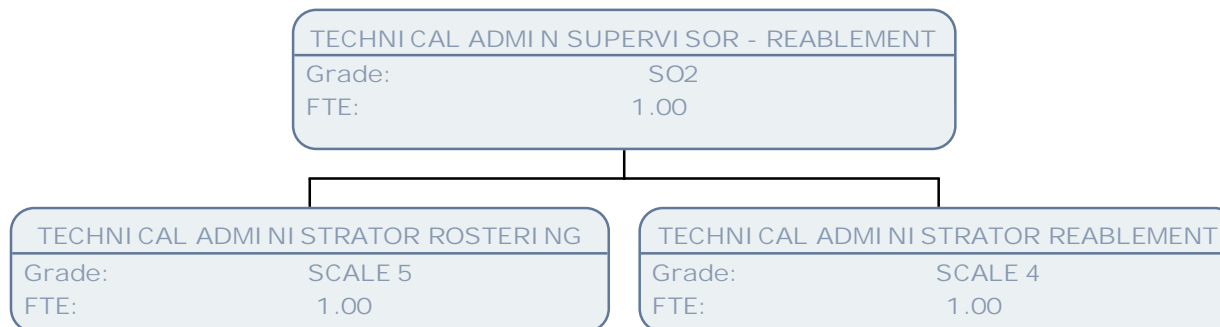


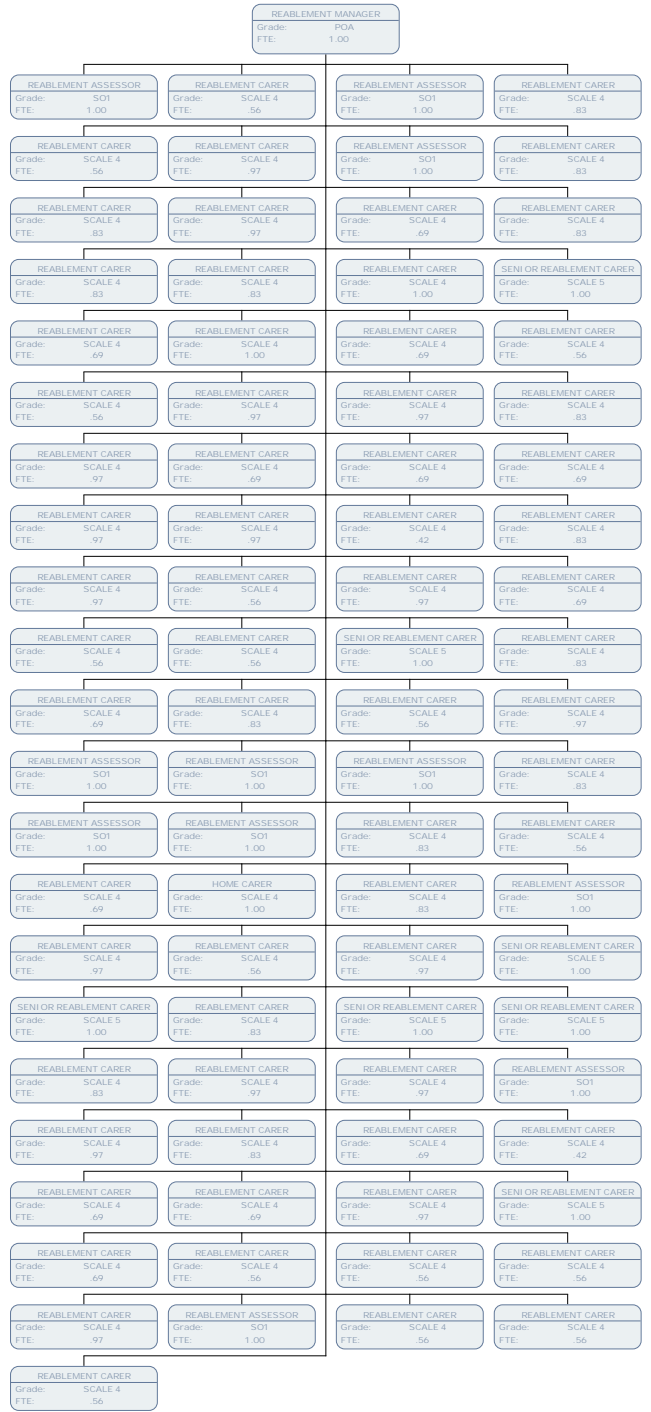


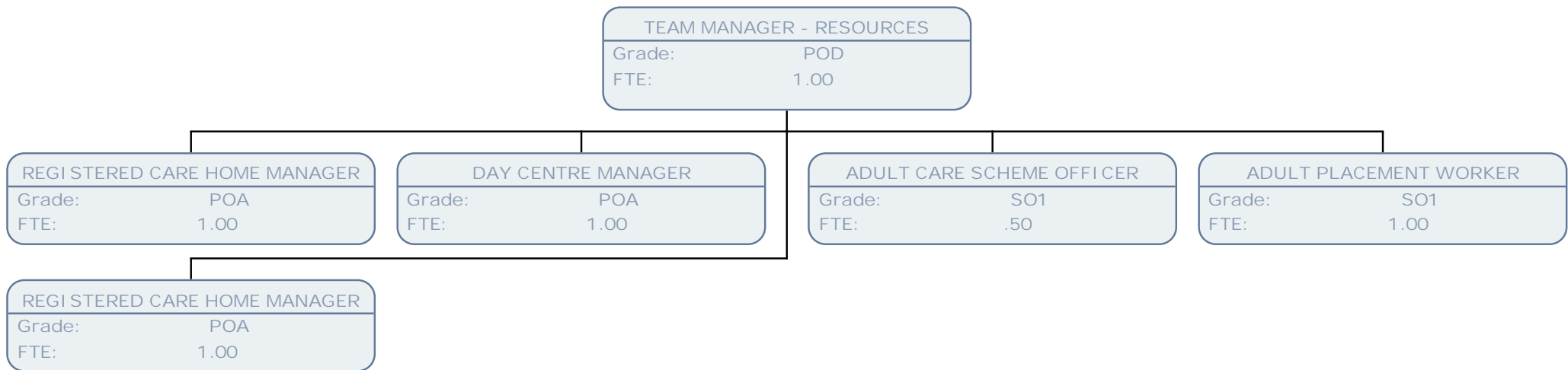


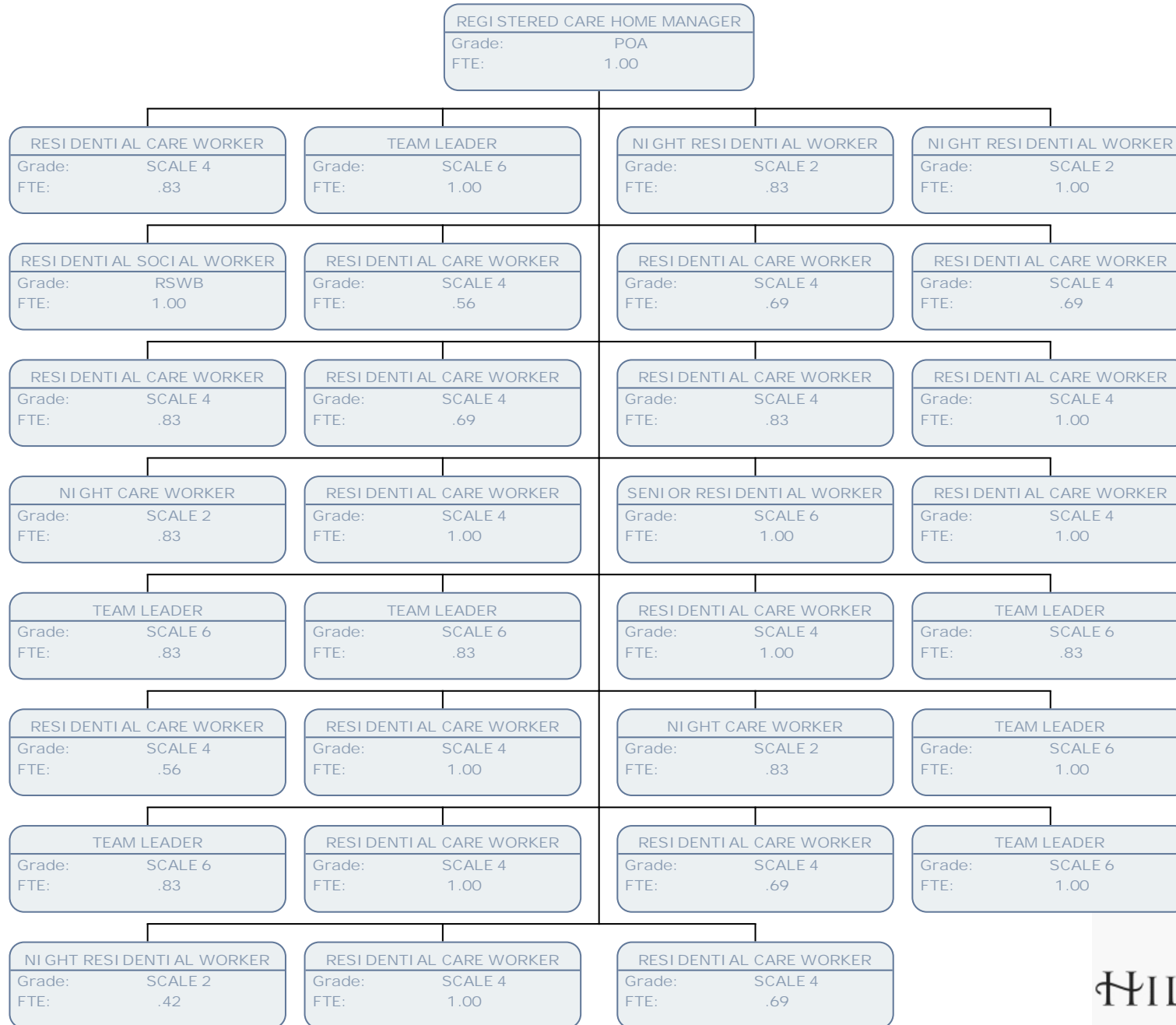


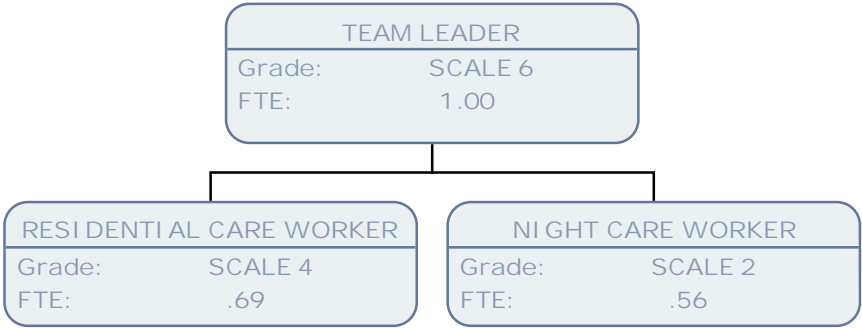


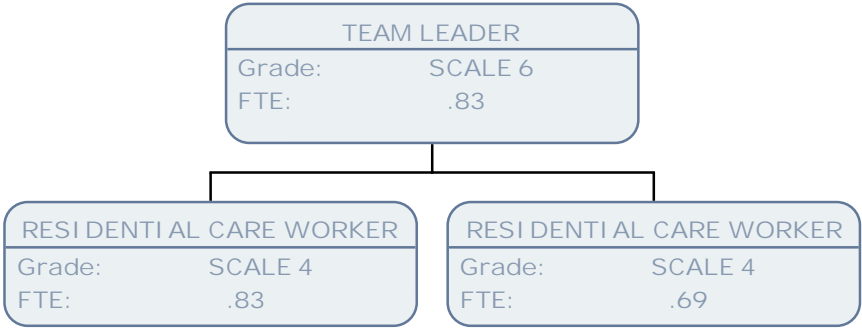


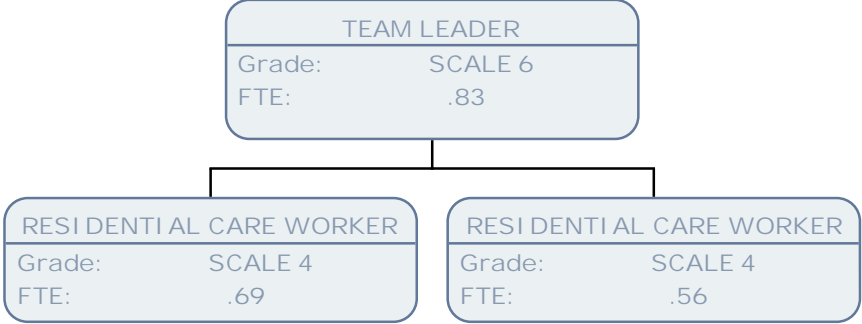


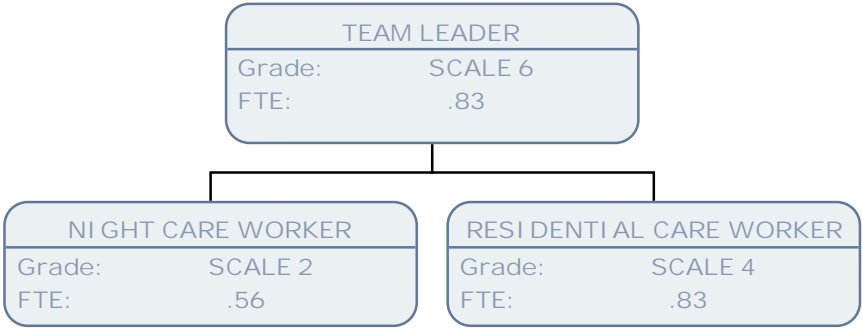


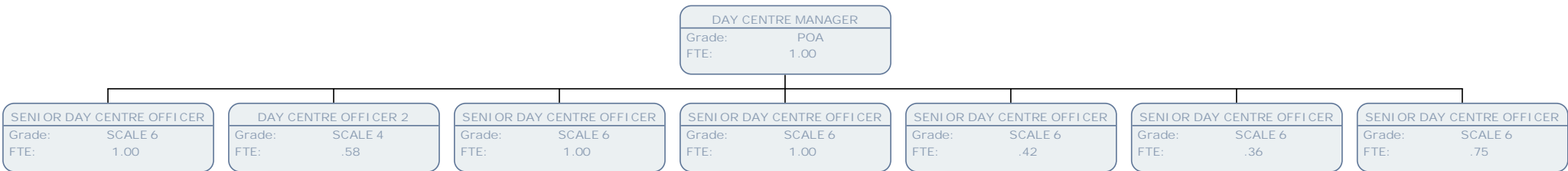


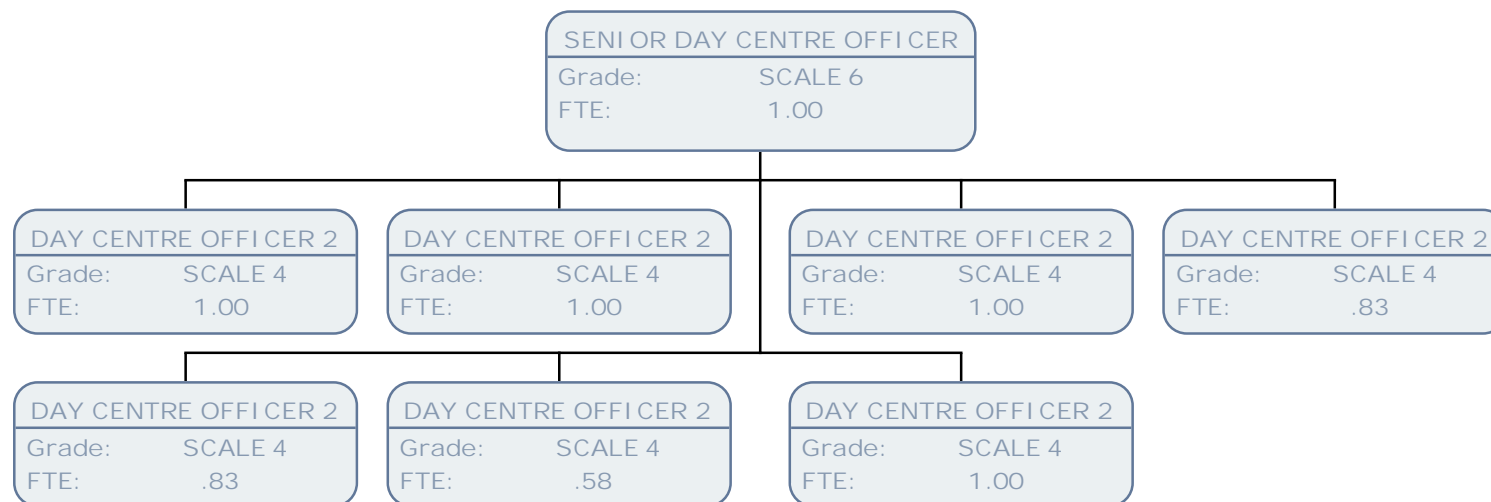


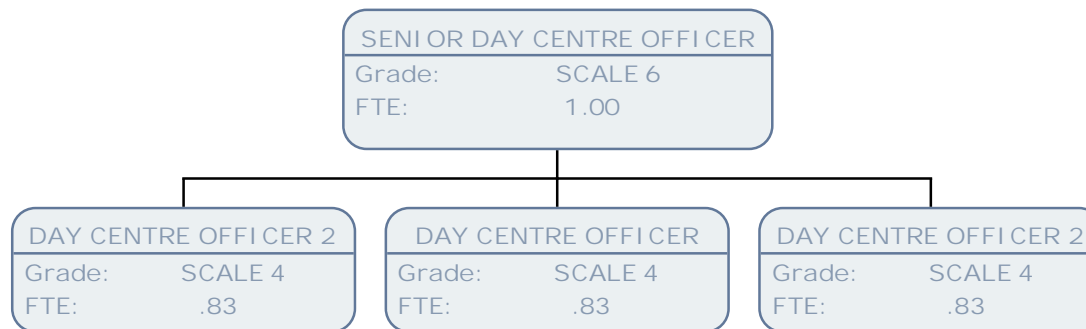


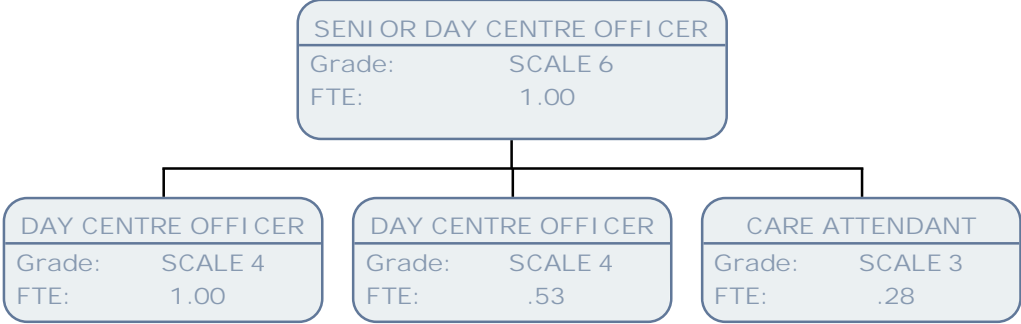


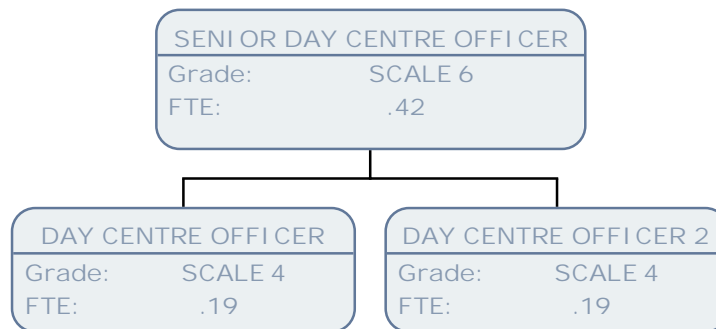


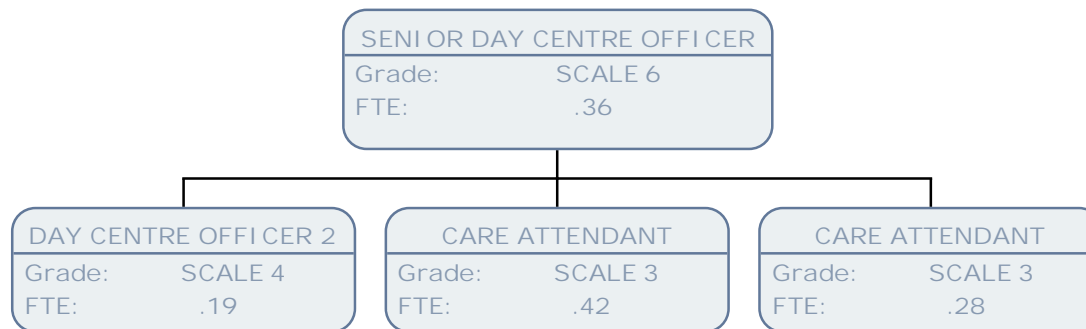


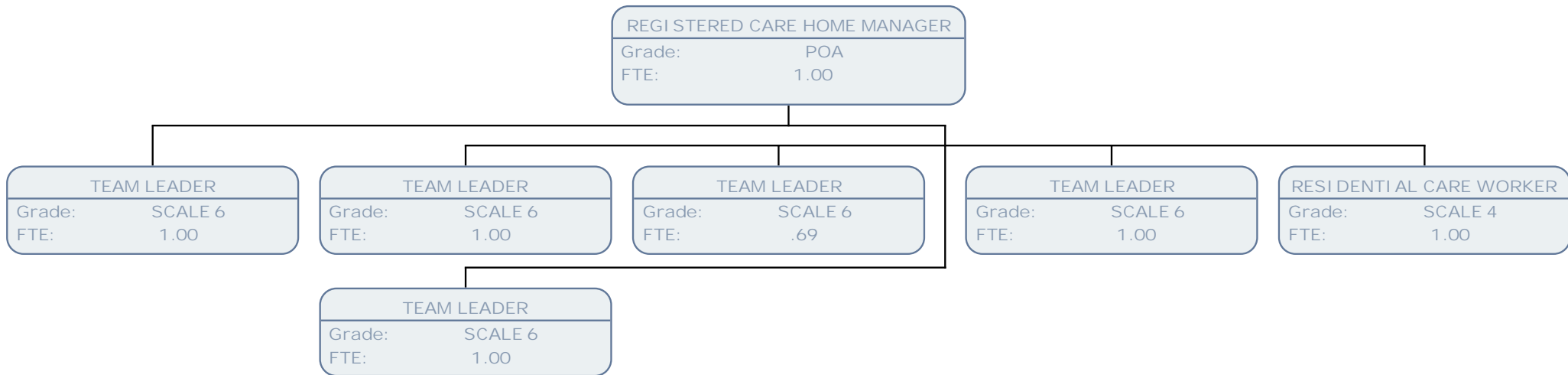


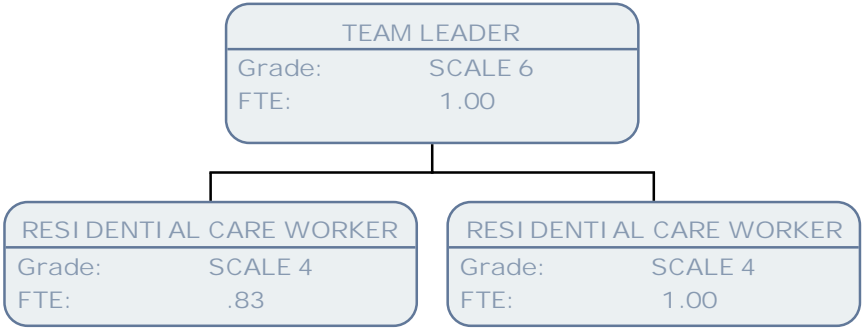


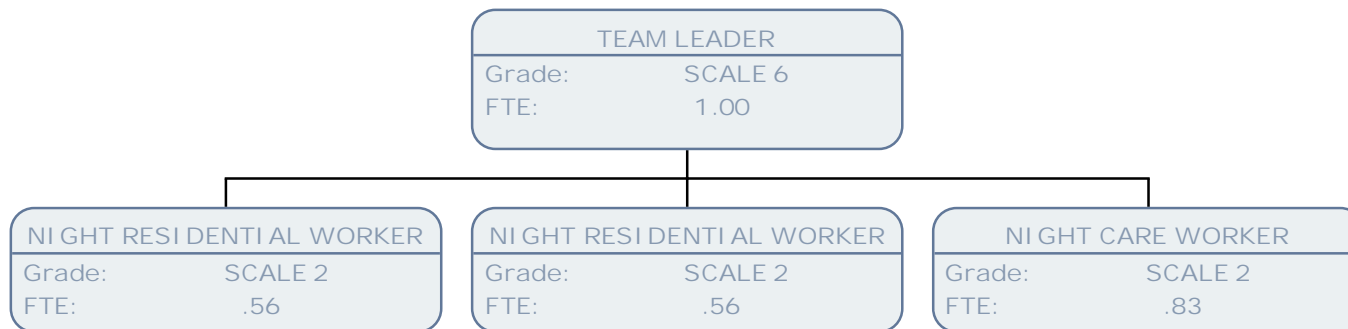


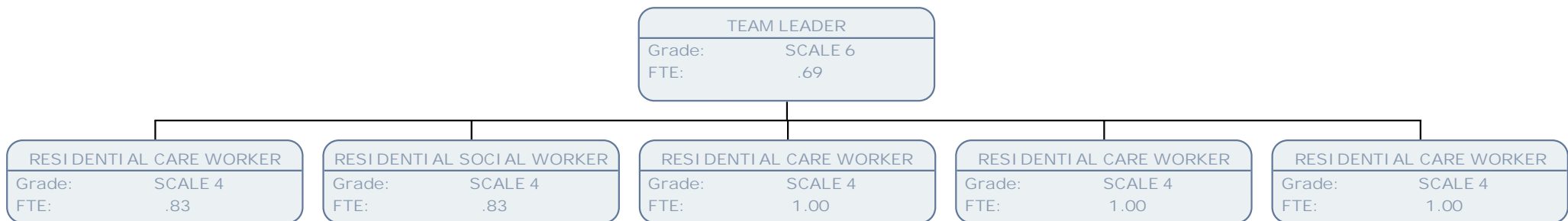


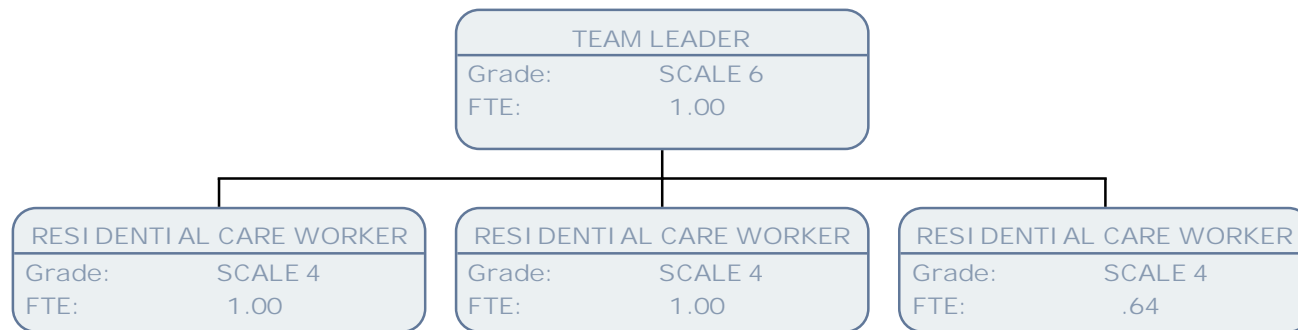


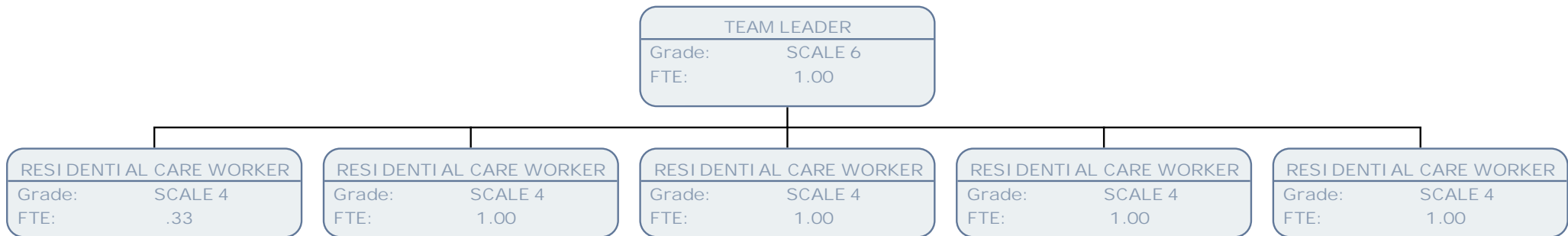


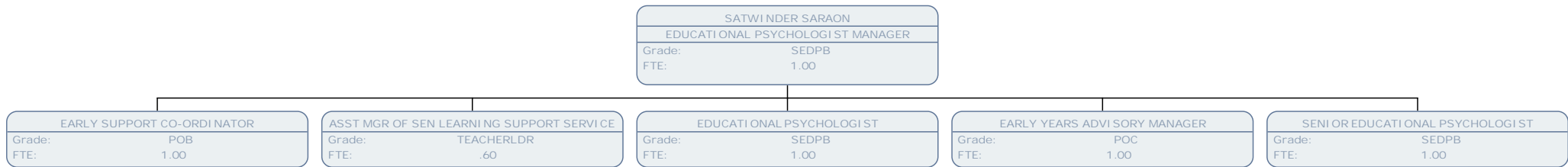


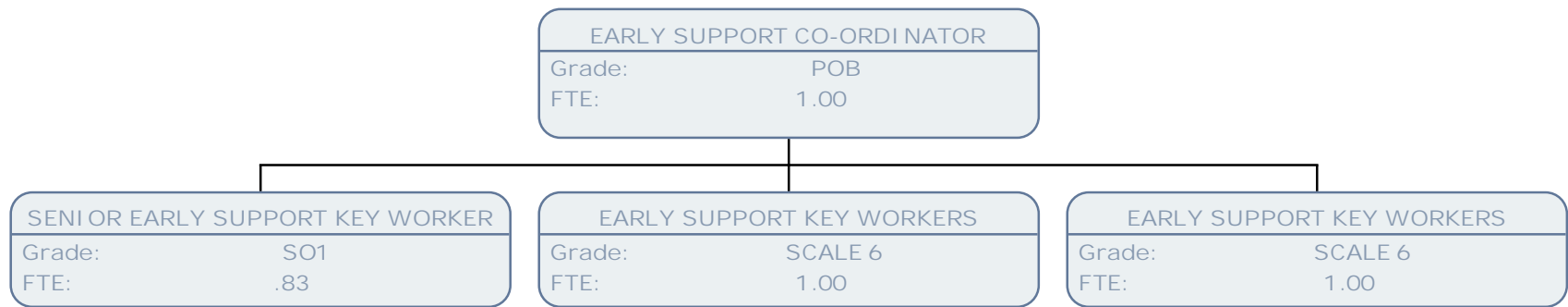


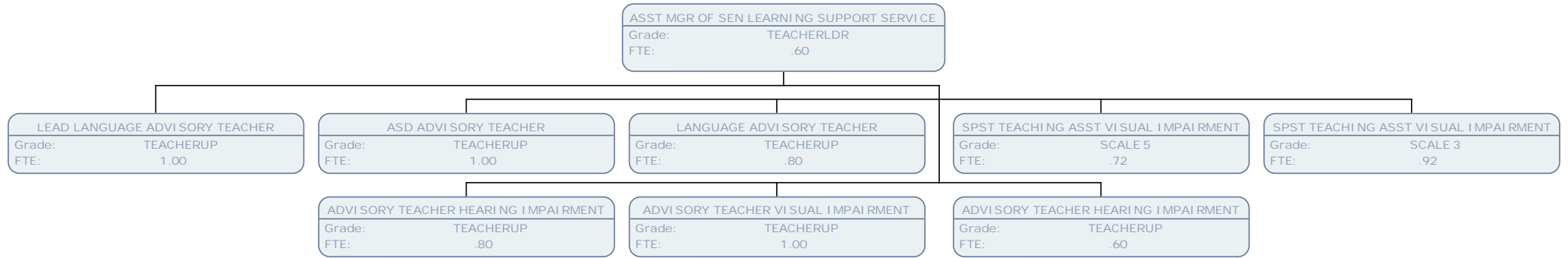


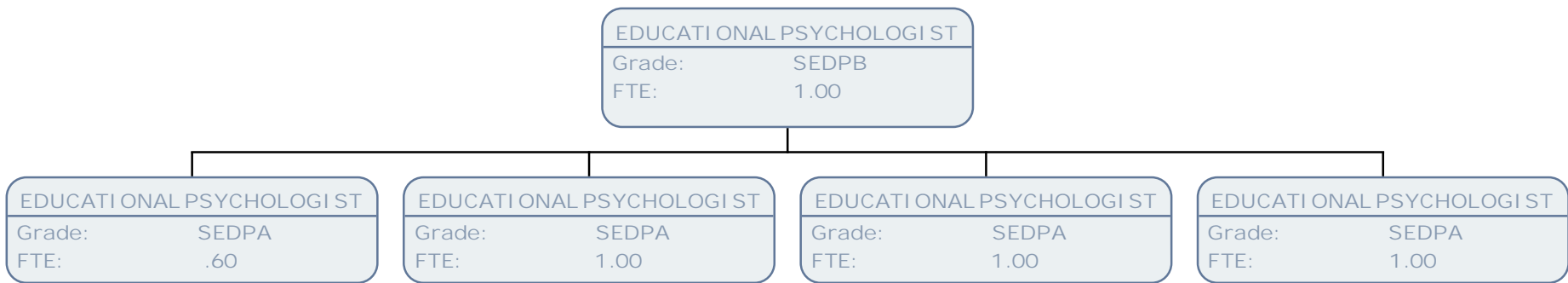


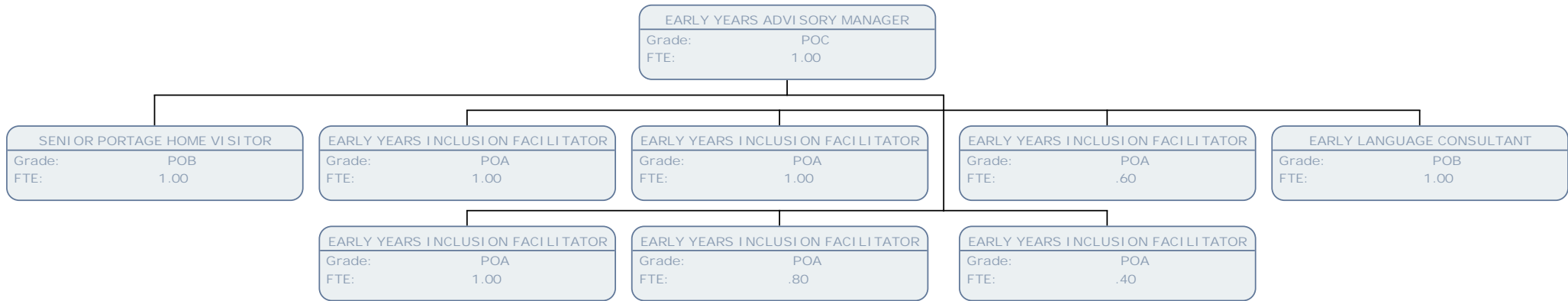


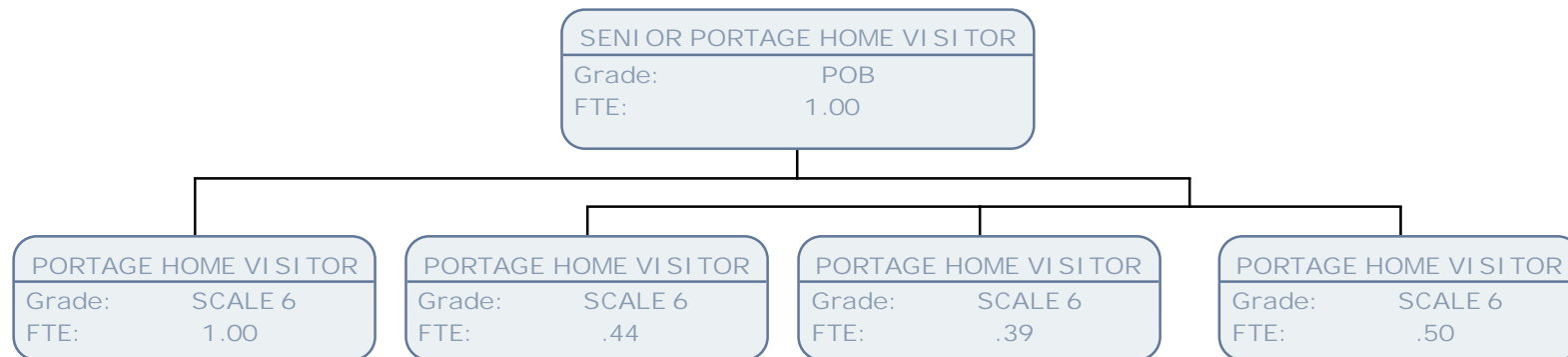


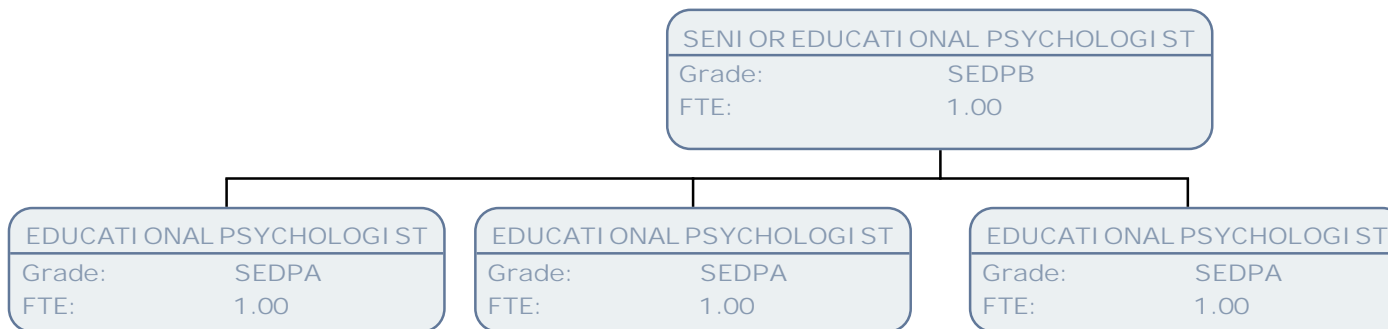












BELINDA NORRIS	
SERVICE MANAGER - OLDER PEOPLES SERVICE	
Grade:	CO1
FTE:	1.00

TEAM MANAGER	
Grade:	POC
FTE:	1.00

PALLIATIVE CARE SOCIAL WORKER	
Grade:	SO2
FTE:	.89

MACMILLAN SENIOR SOCIAL WORKER	
Grade:	POA
FTE:	1.00

MACMILLAN SOCIAL WORK ASSISTANT	
Grade:	SCALE 5
FTE:	.79



