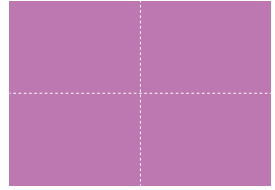


Use a flyer to make your own mini seed tray

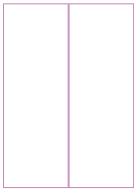
1. Place your flyer in front of you in portrait, advertisement side up, and fold in half top to bottom then open out.



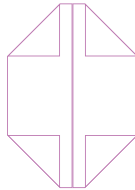
2. Turn it landscape. Fold in half, top to bottom, then open out.



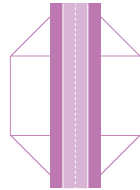
3. Fold the right side and the left side to meet in the centre.



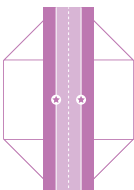
4. Take each corner and fold in at 45 degrees to create four triangles, one in each corner leaving about 10-15mm gap from the top.



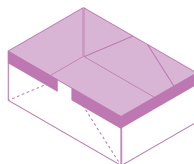
5. Fold back the centre lengths of paper over the right hand triangles. Repeat for the left two triangles.



6. Pull both edges of the centre folds (marked with stars) upwards and outwards.



7. Finish by pressing down firmly in the corners and around the edges to form your rectangular seed tray.



8. Add the compost and seeds, following the instructions on the packet and place on a suitable surface.

