

HILLINGDON people

News from your council
November/December 2024

www.hillingdon.gov.uk

Creating new homes

Help us to
recycle more

Supporting
children in care

A vision for
Uxbridge



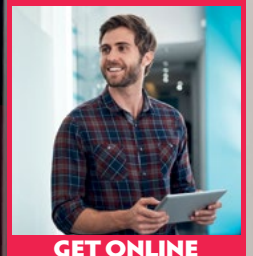
HILLINGDON
LONDON



WINTER WELLNESS



FESTIVE FUN



GET ONLINE



Primary school admissions

Do you have a child born between **1 September 2020 and 31 August 2021?**
If so, you must apply for a school place by **15 January 2025**

For more information, key dates, how to apply and advice, visit www.hillingdon.gov.uk/schooladmissions or email admissions@hillingdon.gov.uk



HILLINGDON
LONDON

www.hillingdon.gov.uk/schooladmissions

Christmas and New Year WASTE AND RECYCLING COLLECTIONS

To minimise disruption to waste and recycling collections during the Christmas and New Year period, we will be working on Saturday 28 and Sunday 29 December and Saturday 4 January.

This will enable collections to return to normal as quickly as possible.

| Normal collection day | Revised collection day | Normal collection day | Revised collection day |
|-----------------------|------------------------|-----------------------|------------------------|
| Monday 23 December | Monday 23 December | Monday 30 December | Monday 30 December |
| Tuesday 24 December | Tuesday 24 December | Tuesday 31 December | Tuesday 31 December |
| Wednesday 25 December | Friday 27 December | Wednesday 1 January | Thursday 2 January |
| Thursday 26 December | Saturday 28 December | Thursday 2 January | Friday 3 January |
| Friday 27 December | Sunday 29 December | Friday 3 January | Saturday 4 January |

Please leave your waste and recycling out by 6am on the day of collection by your front gate but not on the pavement. Separate arrangements are in place for flats and business premises.



HILLINGDON
LONDON

www.hillingdon.gov.uk/rubbishandrecycling

Contents

November/December 2024

Cover stories

- 10 **Help to keep you well this winter**
Support initiatives announced for pensioners.
- 14 **Reimagining Uxbridge town centre**
Have your say on a new vision for the town.
- 16 **Creating more affordable housing**
Building and purchasing new homes for residents.
- 18 **Can you help us climb the recycling charts?**
Take two seconds to check what can be recycled.
- 20 **Supporting our children in care**
Hillingdon People speaks to two young people.
- 22 **Enhancing your online services**
Council invests £9 million in digital technologies.

Regulars

- 4 **Hillingdon News** 28 **What's on?**
- 27 **Partner columns** 31 **Contacts**

COVER PHOTO: JASRAJ DEOL MOVES INTO HIS NEW HOME IN HAYES.

We've aligned stories in this magazine to our Council Strategy to keep you updated on our progress. Below is a key to explain the graphics.



Advertising deadline for next edition: **Friday 22 November.**

Editorial and advertising enquiries

- ☎ 01895 556903
- ✉ hillingdonpeople@hillingdon.gov.uk
- 🌐 www.hillingdon.gov.uk/hillingdonpeople



Published by **Hillingdon Council** © 2024
Hillingdon People, 3E/01 Civic Centre, High Street, Uxbridge, UB8 1UW.
Design Corporate Communications Printed by William Gibbons & Sons Ltd
Products and services advertised in this magazine are not necessarily endorsed by the council.

For a copy in large print or as an audio version call 01895 556903

Welcome



Significant financial pressures are continuing to be experienced by all local authorities, particularly in London, where collectively all 33 boroughs are expected to face a shortfall of more than £600 million this financial year.

Challenges relate to population growth, increased inflation and a prolonged lack of government funding, with major contributors including the rise in demand for adult social care services, care for looked after children, and homelessness.

At the time of writing, the new government's first autumn budget has just been delivered, promising multi-year settlements for local authorities to more effectively manage their budgets. The additional £1.3 billion grant funding to councils for 2025-26, whilst welcome, is not enough to eliminate the £2.3 billion budget shortfall estimated by the Local Government Association. Further savings will therefore have to be found by councils, and Hillingdon is no different.

The government needs to take more decisive action. Additional funding interventions are imperative in stabilising the precarious financial situation faced by councils, and we await further clarity from the upcoming local government settlement to build the council's budget for 2025-26.

The council does not want residents to disproportionately shoulder the burden through increased council tax nor be forced to make cuts to services.

We have consistently worked hard to deliver efficiencies through our successful transformation programme, which has allowed us to maintain and invest in services residents value. We took swift action earlier this year to counter the underfunding. As part of this, we identified a range of interventions and savings opportunities amounting to approximately £39.6 million, with £15.9 million to be delivered during 2024/25 and the balance to follow in later years. We will increase these savings further so that we are able to maintain the core service levels our residents expect.

The council's transformation programme will focus on streamlining back-office functions, realigning council structures with priorities, digitalisation and automation, invest to save projects and income maximisation.

It includes the search for a new operator for the Beck Theatre to prevent a reliance on taxpayer funding and secure a more sustainable future for the facility (page 7); shaping a new vision for Uxbridge to revitalise the local economy (page 14); purchasing and building new homes for those in housing need (page 16); and investing in new digital technologies to enhance how residents access services (page 22).

On a festive note, with Christmas just around the corner, the council is once again offering a range of events and activities to spread cheer and I wish you all a merry Christmas and a Happy New Year!



Cllr Ian Edwards
LEADER OF THE COUNCIL

Nominate your local heroes

Nominations are now open for the council's 2025 Hillingdon Community Awards.

The popular competition, which celebrates the unsung heroes that support our communities, is now in its fourth year.

If you know someone who's demonstrated exceptional bravery, always goes the extra mile to help others, or has dedicated their lives to better those of others, make sure you put them forward.

It doesn't have to be an individual, the awards also recognise the efforts of local community groups.

Ben Rawson-Jones, of the Friends of Northwood Recreation Ground (pictured below), said: "It was a huge honour for the Friends to be given an award from the council for our ongoing efforts to improve our local green space for the community."

The award categories are: Bravery, Helping the Community, Helping Vulnerable People and Promoting Health and Wellbeing.

To nominate, visit www.hillingdon.gov.uk/community-awards-nomination before midnight on Monday 17 February.

Paper forms are also available from Hillingdon libraries and the Civic Centre in Uxbridge.

Winners will be announced in March and presented with their awards at a special ceremony at the Civic Centre on Wednesday 16 April.



Summer Reading Challenge success

Prizes were presented to 17 local children for completing the Summer Reading Challenge at a ceremony on Tuesday 1 October at the Civic Centre in Uxbridge by the Mayor of Hillingdon, Cllr Colleen Sullivan (pictured above).

The Summer Reading Challenge is a national initiative hosted by libraries to encourage children to continue reading during the summer holidays, ensuring

readiness for the autumn school term.

More than 5,600 children, aged four to 11, took part in Hillingdon this year, and the names of those who completed all four visits to a library were entered into a prize draw.

The main reward was a Kindle Fire and Kodak camera bundle, and art sets were given to 16 other children, one from each library, at the ceremony.

Borough's top gardeners reap rewards

Residents have once again showcased their growing skills as part of the council's Autumn Show and Hillingdon in Bloom competitions.

The Autumn Show – a competition for homegrown produce, floristry and art – took place on Saturday 14 September at Manor Farm's Great Barn, Ruislip, and featured 314 individual exhibits, from 82 entrants across 59 categories.

Entries were judged by a panel led by RHS and Middlesex Guild Judge, Gerry Edwards; the Mayor of Hillingdon, Cllr Colleen Sullivan; Deputy Leader of the Council, Cllr Jonathan Bianco; and members of the council's green spaces team.

'Best in Show' was awarded to Margaret McIntosh (pictured right) for her incredible displays in the 'Dahlia 6-12' category. Her bright blooms also helped her win a number of other prizes.

Despite a damp start, this year's Hillingdon in Bloom – the council's fun, free gardening competition – flourished. It saw 123 entries from 46 residents across eight categories, and participants eagerly competed for prizes, including RHS gift vouchers.



Satinder Mann from Yiewsley, entered her balcony display and scooped first place.

She said: "Some people might call it an addiction, but gardening just makes me happy. Whatever space I have I am growing things, inside, outside, and the balcony is just like an extension of my living room."

To view the full list of winners, visit www.hillingdon.gov.uk/gardening.



Government urged to deliver new hospital

Last month, the council called on the government to reassure residents and honour its commitment to build the new Hillingdon Hospital.

Leader of the Council, Cllr Ian Edwards, wrote to health secretary Wes Streeting expressing deep concern over his letter to MPs in September indicating that the provision of the new hospital was to be reviewed by the government.

In that letter, Mr Streeting said the New Hospital Programme was "undeliverable and unaffordable" with Hillingdon Hospital, which received planning permission in January last year, one of 25 projects to be reviewed.

Cllr Edwards, in his letter to the health secretary, said: "This has caused significant concern among the residents of Hillingdon, who have been eagerly anticipating the much-needed improvements to our local healthcare facilities.

"It is no secret that the current Hillingdon Hospital is in urgent need of modernisation to meet the growing demands of our community."

Cllr Edwards pointed out that during a visit to the hospital in June this year, Mr Streeting commented that it was "the worst hospital I have ever seen as shadow health secretary, indeed as a member of parliament." At the time, Mr Streeting added: "Staff are working in intolerable conditions, patients are sweltering in intolerable conditions."

The new hospital, which received the assurance of full funding by the previous government, promises to provide state-of-the-art facilities in new buildings and

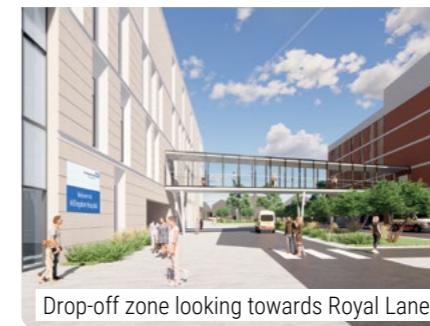
enhanced patient care for local people for generations to come.

Cllr Edwards added: "You backed this during your visit on 26 June by saying, 'I'm making a commitment today that the next Labour government will deliver the modern state-of-the-art hospital that the people of Hillingdon need. And we will do it in the first term of a Labour government'."

"The decision to review this project, with no consultation, not only delays these critical improvements but also undermines the trust of Hillingdon residents in the promises you have made to them regarding the hospital.

"I urge you to reassure our local community that you are indeed a man of your word and that the commitments you made regarding the construction of the new Hillingdon Hospital in the first term of a Labour government will be honoured."

However, the council received a response from the Department of Health and Social Care on Tuesday 22 October which highlighted that the government is unable to commit to a new hospital before the next election while its review is ongoing, despite the hospital already having planning permission, funding allocated, and enabling works carried out.



Drop-off zone looking towards Royal Lane

Cracking down on Blue Badge fraudsters

A Blue Badge amnesty will be launched this month by the council to reduce incidents of disabled parking permit fraud.

The initiative, between Monday 18 November and Monday 2 December, is an opportunity for residents to hand in any badges which they are not entitled to with no questions asked or any ramifications.

More than 14,000 residents have Blue Badges issued by the council. The service is highly valued by people with disabilities and serious health conditions who struggle with mobility.

As part of Fraud Awareness Week (Sunday 17 to Saturday 23 November) the council is also raising awareness of common types of fraud, how it's tackling them and how residents can play their part in reporting deception.

The council's counter fraud team has prevented the loss of more than £5.8 million so far this financial year and the team is ranked one of the best in the country for recovering the most social housing (103 properties), thanks to its proactive investigative work.

Cllr Martin Goddard, Cabinet Member for Finance and Transformation, said: "Blue Badges help people with disabilities and health conditions park closer to their destination, but sadly they can be abused which is unfair on those that rely on the exemptions and dedicated parking spaces.

"We have prosecuted 11 people for Blue Badge fraud in the past year with each receiving a fine, and are giving people who may be misusing them this opportunity to return them, with no questions asked."

Residents can return Blue Badges that have expired, belong to another person or are no longer necessary to the collection boxes at the Civic Centre, Uxbridge; Botwell Green Library and Northwood Hills Library.

If you suspect that someone is committing fraud against the council, you can report it directly to us in confidence at www.hillingdon.gov.uk/report-fraud or by calling 0800 389 8313.

Building homes for our children in need

The council is continuing to provide outstanding support to vulnerable children through the construction of six new residential homes in the borough.

Cllr Susan O'Brien, Cabinet Member for Children, Families and Education, and Cllr Jonathan Bianco, Deputy Leader and Cabinet Member for Corporate Services and Property, attended a groundbreaking ceremony on Thursday 12 September (pictured right).

Once completed, the homes will provide accommodation for 12 children, up to the age of 18, and mean they can remain in the borough, continue to attend their schools or colleges, and maintain links with their family, friends and support network.

Specialised workers from the council will be available 24 hours a day to give the young people access



to bespoke, wraparound support services in a safe and comfortable environment, and as they get older, they will be supported into independent accommodation.

Cllr O'Brien said: "I'm delighted to see these new homes take shape, which, once completed, will be safe and welcoming places to live, and spaces young people needing more support can make their own and have opportunities to thrive."

A separate education centre for tuition, activities and games will be included on site, along with a multi-use games area.

In line with the council's commitment to being a green and sustainable borough, the new properties will be fitted with solar panels and air source heat pumps and electric vehicle charging points.

Work is expected to complete in spring.

New strategy set to create routes and boost active travel

An ambitious 10-year plan for improving cycle infrastructure and making it easier for residents of all ages and abilities to switch to active travel has been unveiled by the council.

The new Cycling Strategy 2024-34, details the council's plans for making cycling safer and more accessible for everyone, through measures including new and upgraded cycle routes, and by working to future-proof active travel in the borough.

The strategy was formally launched at an event held jointly in St Martin's Church Hall and The Closes park, West Drayton, on Friday 27 September with pupils from St Catherine Catholic

Primary School and St Martin's CE Primary School (pictured below).

Central to the plans is the creation of eight new dedicated cycle routes, some of which use the borough's green spaces and towpaths.

The strategy was updated to include residents' feedback following a public consultation earlier this year, where more than 70 per cent expressed willingness to cycle more and nearly 90 per cent supported the overall strategy aims.

In recent years, the council has made strides in cycling provision, including delivering more cycle parking, free cycle training for all ages, and enhancing towpaths.



Cllr Lavery on the Rockingham Road to Oxford Road stretch of the canal

In September, resurfacing works concluded at the Rockingham Road to Oxford Road stretch along the Grand Union Canal in Uxbridge.

Cllr Jonathan Bianco, Deputy Leader and Cabinet Member, said: "During the next 10 years our target is to see more people, of all backgrounds and abilities, confidently and safely using the borough's cycle network and highways.

"Our approach is to try and bring existing and new cyclists along for the journey by creating facilities that make them choose to ride instead of driving."

The strategy can be viewed at www.hillingdon.gov.uk/cycling.



Securing a sustainable future for the Beck

Last month, the council appointed commercial theatre consultants to support its procurement of a long-term operator for the Beck Theatre in Hayes.

The council had been seeking to negotiate a new lease with Trafalgar Theatres for them to continue its management of the facility at a peppercorn rent with the council being responsible for essential repairs and maintenance. Trafalgar had insisted that, in addition, the council pay an ongoing subsidy. The council has determined that this is no longer appropriate with public finances under such pressure, noting Trafalgar Theatres

is owned by a profit-making organisation that pays dividends.

In the absence of an agreement, Trafalgar's contract with the council will cease on 13 January and the Beck Theatre will close while the consultants seek new management.

Leader of the Council, Cllr Ian Edwards, said: "We recognise the valuable contributions our theatres make to our communities and are committed to retaining a strong arts and culture offer.

"Council officers and elected councillors continue to work tirelessly to secure the venue's long-term stability as a commercial theatre without financial subsidy from the taxpayer."

Changes to the council's Cabinet

Last month, the council announced alterations to its Cabinet.

Cllr Douglas Mills, who was Cabinet Member for Corporate Services, has left the Cabinet after 22 years' service. He joined the first Cabinet formed in Hillingdon in 2002 as Member for Performance and Regeneration and has held a variety of roles since.

Cllr Steve Tuckwell, ward councillor for South Ruislip, has joined the Cabinet, with responsibility for the newly created Planning, Housing and Growth portfolio.

Following this change, the responsibilities of three serving Cabinet members have been rebalanced. These are:

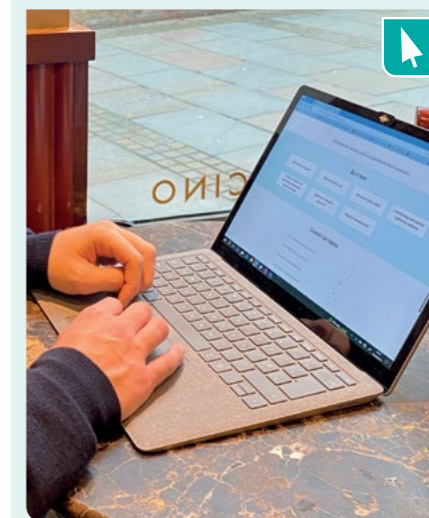
- Cllr Martin Goddard, Cabinet Member for Finance and Transformation
- Cllr Jonathan Bianco, Deputy Leader and Cabinet Member for Corporate Services and Property



Cllr Steve Tuckwell

- Cllr Eddie Lavery, Cabinet Member for Community and Environment.

The portfolios of Cllr Susan O'Brien, Cabinet Member for Children, Families and Education, and Cllr Jane Palmer, Cabinet Member for Health and Social Care, are unchanged.



Sign up today for e-billing

Residents are being encouraged to make the switch to receive their annual council tax bills online, rather than as a paper copy.

More than 22,000 households are signed up to e-billing, which is a more convenient, eco-friendly way to manage your council tax account. All you need to do is register online, and you will receive bills directly to your email, allowing you to access them at your own convenience from a computer, tablet, or smartphone. You can also set up direct debit payments to make it easier to pay your bills each month.

As well as receiving an online bill, you will be signposted to the council's annual council tax guide, which provides more information about how much council tax you are required to pay for that financial year, how the money will be spent, and how much goes to other organisations.

Cllr Martin Goddard, Cabinet Member for Finance and Transformation, said:

"Our transformation programme continues to identify opportunities for the council to work more efficiently and digitally, while offering value for money.

"Paperless billing is just one of the ways we are making it quicker and easier for residents to carry out transactions online, meeting climate change commitments by reducing the use of paper and delivering savings through the reduction of print and postage costs."

For more information and to sign up, visit www.hillingdon.gov.uk/register-your-account.



Your views wanted on climate action

Residents, businesses and community groups are being invited to share their views on a review of the council's Strategic Climate Action Plan.

The strategy sets out the actions the council intends to take from 2025 to 2028 in order to tackle the climate emergency. It reaffirms the council's ambition to have net-zero carbon operations by 2030, along with preserving and enhancing the borough's biodiversity, improving waste management and reducing the risk of flooding.

The council's Cabinet agreed in October to put its updated plan out for public review, with the consultation running until Sunday 12 January.

Feedback will be taken into consideration when preparing the final document, which the council expects to adopt next spring.

Cllr Eddie Lavery, Cabinet Member for Community and Environment, said: "Our revised Climate Action Plan sets out how we'll build upon the work we've already achieved through expansive tree-planting, installation of flood resilience measures, creating electric vehicle charging bays and significantly reducing the carbon footprint across our own estate.

"We're making great strides in reducing the organisation's carbon footprint and will further this by working in collaboration with residents and partners, so we need everyone to share their views and together we can create a greener future."

Have your say at www.hillingdon.gov.uk/climate-strategy-consultation.



New children's autism facility opens

In October, the council celebrated the official opening of a new facility providing support for children with Special Educational Needs and Disabilities (SEND) at Wood End Park Academy in Hayes.

The designated unit provides 24 places for children, aged four to 11, with autism spectrum condition, and the Mayor of Hillingdon, Cllr Colleen Sullivan, attended the official opening on Friday 18 October (pictured above).

This new facility allows children to benefit from some integration into the mainstream school environment, while maintaining their own space to learn with the support of specialist teaching staff.

It aims to help these children progress in their education with tailored support, focusing on both language and social skills development.

All of the council's SEND maintained schools are rated as 'Good' or 'Outstanding' by Ofsted and provide an adapted and nurturing environment to support young people through their education.

Discover more by taking a virtual tour and meet the dedicated staff, as well as the parents and children who benefit from their support, at www.hillingdon.gov.uk/maintained-special-schools.



New project pioneers patient discharge

Working in collaboration with its partners, the council has become the first local authority in London to introduce new technology aimed at improving patient discharge processes from hospitals.

Together with Hillingdon Hospitals NHS Foundation Trust, the council's adult social care team can now access a single source of real-time information about each patient's discharge arrangements. The council and the trust were established as one of the first implementation sites to test the Optimised Patient Tracking and Intelligent Choices Application (OPTICA) at the start of the year.

OPTICA monitors all admitted patients and the tasks relating to their discharge. This ensures that patients are effectively discharged from hospital without delay.

North west London's acute providers, in partnership with the council, the NHS North West London Integrated Care Board, and Imperial College Health Partners, delivered the secure system, and the streamlined process allows staff to focus more on direct care, rather than administrative tasks.

Cllr Jane Palmer, Cabinet Member for Health and Social Care, said: "The introduction of this new system is a significant milestone for the council, helping to ensure smooth and timely discharges from hospital for patients and, in turn, preventing delays and freeing up much-needed hospital beds.

"This is part of our work with the NHS and other organisations to develop innovative joined-up services to meet the health, care and support needs of our residents."

Rogue landlord lands hefty fine for illegal overcrowding

An unscrupulous landlord from Hayes with a history of offending has been ordered to pay £28,729 after the council caught him with double the number of safe tenants living in his illegal house of multiple occupancy (HMO).

On Tuesday 10 September, following an investigation by the council's planning enforcement and private sector housing teams, Tarsem Dhillon, of Dawley Road, appeared at Uxbridge Magistrates' Court and was sentenced for continuing to use one of his properties in Hayes as an HMO, despite this being in breach of a previous enforcement notice served

by the council, and for deliberately cramming in twice the number of tenants it could safely accommodate.

Following reports from concerned residents, in March 2023, council officers executed a warrant to enter the property on Station Road, Hayes and uncovered that the property was still in use as an HMO.

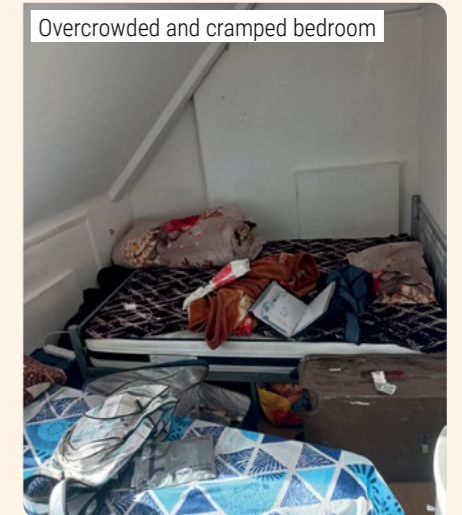
In addition, despite the previous HMO licence stating only six households or people could live in the property, officers found it to be comprised of seven households and at least 14 people.

Dhillon was found guilty of breaching the Town and Country Planning Act 1990 and the Housing Act 2004 following a trial in the same court on 24 May, this year.

At September's hearing, the court heard that Dhillon illegally earned approximately £20,000 in rental income over a 10-month period.

For the two offences, Dhillon was fined £20,000, ordered to pay a £2,000 victim surcharge and the council's prosecution costs of £6,729.

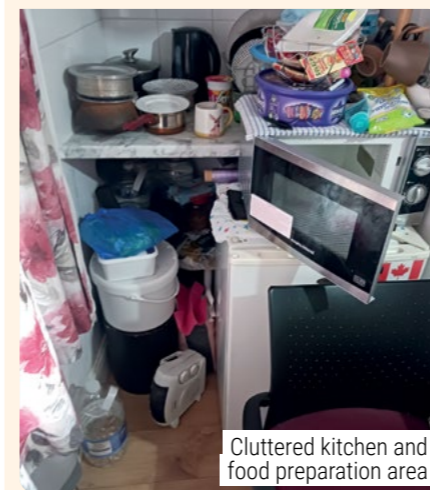
In March 2023, Dhillon was fined more than £15,000 after illegally altering buildings he rented out as HMOs.



Cllr Eddie Lavery, Cabinet Member for Community and Environment, said: "This is another excellent result for the council and sends a clear message that we will not tolerate rogue landlords.

"Dhillon has persisted in his flagrant disregard of the rules and responsibilities of a landlord, treating his tenants as nothing more than a commodity for financial gain."

If you are worried about poor health and safety standards or overcrowding in an HMO, email hmolicensing@hillingsdon.gov.uk.



Business owner sentenced for dodging waste charges

A West Drayton businesswoman has been given a suspended prison sentence and ordered to pay £1,000 for abusing staff and refusing to pay more than £12,000 of waste and disposal charges at the council's Harefield Civic Amenity Site.

On Thursday 8 August, Adeola Coker, 42, of S&C Cleaning Services Ltd, Harrow, was sentenced to 11

months' imprisonment, suspended for two years, and 120 hours of unpaid work at Isleworth Crown Court.

Between March 2021 and September 2022, Coker and her employees illegally disposed of commercial waste at the civic amenity site without payment. When confronted, Coker falsely claimed the waste was from a family

member's home and became abusive and threatening towards staff.

During sentencing, the judge ordered Coker to pay £1,000 compensation to one member of staff who was the main target of her abuse.

Cllr Eddie Lavery, Cabinet Member for Community and Environment, said: "It's shocking to see the complete disregard shown for the rules and safety of our staff at the civic amenity site. While rare, we will always take a zero-tolerance approach to this type of behaviour, and pursue strict punishments.

"Every business, no matter how big or small they are, has a responsibility to dispose of their waste correctly."

Harefield Civic Amenity Site is free for residents to dispose up to five black bags of domestic waste. Residents with larger loads and visitors or businesses with trade waste will be charged by weight. Find out more at www.hillingdon.gov.uk/rubbishandrecycling.



Winter wellness: your essential guide

The council, NHS and local partners offer a range of support to keep you well during the colder months.

Household Support Fund and help for older people

In September, the government announced a new Household Support Fund (HSF) and the council has been allocated approximately £2 million for the winter period 1 October 2024 to 31 March 2025, to support low-income and vulnerable households.



The council has created a support package in response to the government's cut in winter fuel payments, affecting thousands of Hillingdon pensioners. Using the HSF, the council is:

- working with Age UK to assist pensioners who may be entitled to Pension Credit to submit a claim. If you require support to make an application, call 020 8756 3040 (select option 1) or email enquiries@ageukhbb.org.uk.
- supporting pensioners who are not eligible for the Winter Fuel Allowance, were born

before 23 September 1958, and experiencing financial hardship to apply for utility bill support. Exceptional support is also available for those facing significant hardship, with applications assessed on financial criteria and proof of household income.

Eligible households with children aged up to 19 years old who receive benefit-related free school meals can also receive £15 per child per week for a total of four weeks, split into two separate payments covering the Christmas holiday and February half-term periods.

Find out more and apply at www.hillingdon.gov.uk/household-support-fund.

Cllr Jane Palmer, Cabinet Member for Health and Social Care, said: "While we cannot fully offset the impact of the government's cut to winter fuel allowance for our vulnerable residents, we are committed to supporting Hillingdon's 13,000 pensioners this winter through our own targeted support package."

Warm welcome centres

The council also works in partnership with a range of organisations to set up warm welcome centres across the borough. These locations provide residents with information, advice, warm drinks and social activities.

Last winter, more than 7,000 residents attended warm welcome centres in churches, community centres, libraries, and leisure centres. Activities included coffee mornings, exercise classes, film screenings, arts and crafts and games afternoons.

Find out more at discover.hillingdon.gov.uk/warm-welcome-centre-activities.



Hillingdon Asian Women's Group at Hayes & Harlington Community Centre

Staying active and warm

Regular exercise reduces the risk of serious illnesses and boosts mental wellbeing.

Why not enjoy a winter stroll in our parks or sign up for Twilight Yoga at the Battle of Britain Bunker via battleofbritainbunker.co.uk/whats-on?

For residents aged over 65, the council offers free swimming, chairyobics, and dance classes. Visit www.hillingdon.gov.uk/moves for more information.

Wearing warm layers and appropriate outdoor clothing is essential to stay comfortable and healthy during the colder months.

Make sure to eat at least one hot meal a day and regularly consume warm drinks.

Try to keep room temperature between 18 and 20 degrees and if heating the entire house is difficult, focus on keeping one room warm.

Winter vaccinations

Book your flu and COVID-19 vaccination appointments to give you the most protection during the colder months.

Find out more at www.nwondonicb.nhs.uk/Winter, www.nwondonicb.nhs.uk/your-health-services/Covid-19 or scan the QR code on page 26.

This year, the NHS is rolling out the respiratory syncytial virus (RSV) vaccine to people over 75 years, and those who are over 28 weeks into their pregnancy.

Find out more at www.nhs.uk/conditions/respiratory-syncytial-virus-rsv.

 Thriving, healthy households

UNWRAP THE MAGIC THIS CHRISTMAS



Step into the festive season with an array of seasonal activities organised by the council. Enjoy Christmas light switch-on events, free parking, and festive fun for all the family at libraries, theatres, and heritage sites.

Deck the halls!

This month, residents and visitors can enjoy sparkly Christmas lights and trees across the borough.

Once again, the council is supporting 28 council-led and

four community-led Christmas lights schemes, which will illuminate areas across Hillingdon's 21 wards. Nine large Christmas trees will also be installed at selected sites.



Christmas trees for sale

From Monday 2 December, head to the Rural Activities Garden Centre on West Drayton Road, Hillingdon, to choose from a selection of Nordmann non-drop premium Christmas trees. Priced competitively between £40 to £60 dependent on height, these high quality trees are perfect for adding a festive touch to your home.

You'll also find a variety of potted trees grown at the centre, alongside a collection of handcrafted Christmas wreaths, festive gifts and decorations.

Christmas market returns

The annual market, located outside The Pavilions Shopping Centre in Uxbridge, runs from Friday 15 November to Tuesday 24 December. Highlights include traditional wooden chalets offering a range of bespoke festive gifts, seasonal delicacies and live music and carol singing at weekends.

Children's activities

Libraries across Hillingdon will be organising festive children's storytime sessions, light-up Christmas card workshops and a range of fun for all the family. Find out more and book at discover.hillingdon.gov.uk/events.

The Battle of Britain Bunker is inviting families to join in a free Christmas crafting event on Saturday 14 and Sunday 15 December from 11am to 3.30pm. Find out more at battleofbritainbunker.co.uk/whats-on.

For more information on Christmas in Hillingdon, visit www.hillingdon.gov.uk/christmas

Festive cheer at the theatre

Hillingdon theatres will be offering a range of festive shows for the whole family.

For younger children, don't miss *The Santa Show* at the Compass Theatre in Ickenham – a 45-minute live stage show featuring songs, audience interaction, and a special gift from Santa for every child (recommended for ages three and over).

The theatre is also hosting a fun-filled family pantomime *Snow White*, starting Thursday 5 December. This high-energy production promises sparkling costumes, popular songs and plenty of audience participation to keep everyone entertained!

For the full listings and to book, visit discover.hillingdon.gov.uk/theatres.

Free parking at high streets

The council is encouraging people to shop locally to support the borough's high streets and independent businesses this Christmas, and once again will be providing free parking to HillingdonFirst cardholders on two weekends during the festive period.

This offer is available in council-owned car parks and on-street parking bays (excluding Ruislip Lido, Botwell Green, Highgrove and Hillingdon leisure centres) on Saturday 14 and Sunday 15 December, and Saturday 21 and Sunday 22 December.

Those using PayByPhone must register their HillingdonFirst card on the app to enjoy this offer. For more information, visit www.hillingdon.gov.uk/paybyphone.

 A thriving economy

Council rises to the challenge following localised flash floods

At the end of September, the borough experienced unprecedented levels of rainfall. *Hillingdon People* looks at how the council provided support.

On Monday 23 September, a month's worth of rain fell in a single day. The first reports from residents came into the council in the early hours, and by daybreak and rush hour, some roads were impassable and homes and buildings, including local schools, were affected by run-off surface water.

A group was established by the council to coordinate and oversee the response to a rising number of issues.

Despite the disruption, the majority of council services ran normally throughout the challenging weather, with all returning to full operation by Tuesday.

Three local schools were closed on the day; Bourne Primary School in South Ruislip, Queensmead Secondary School, Ruislip and Ruislip High School, Ruislip Gardens. Queensmead and Ruislip High opened the day after, while Bourne Primary required remedial works to dry, repair, cleanse and sanitise its spaces.

On the Monday, the council's property repairs team inspected the school sites and, where required, helped pump water clear of the buildings to minimise risk of further damage. The next priority was ensuring minimal disruption to the



Checking on residents' welfare in Ruislip Gardens

education of pupils from Bourne Primary, which had to remain closed initially, and remote learning was delivered. Fortunately, all the pupils were able to return to school the following week, while the remedial works were finishing.

As part of its response, the council also organised welfare checks on residents and local businesses. Teams visited roads known to have been affected and to identify and support any vulnerable families. Council officers knocked on doors in Ruislip Gardens and spoke with residents and distributed letters which



Furniture is delivered to Bourne Primary School by the council's facilities team

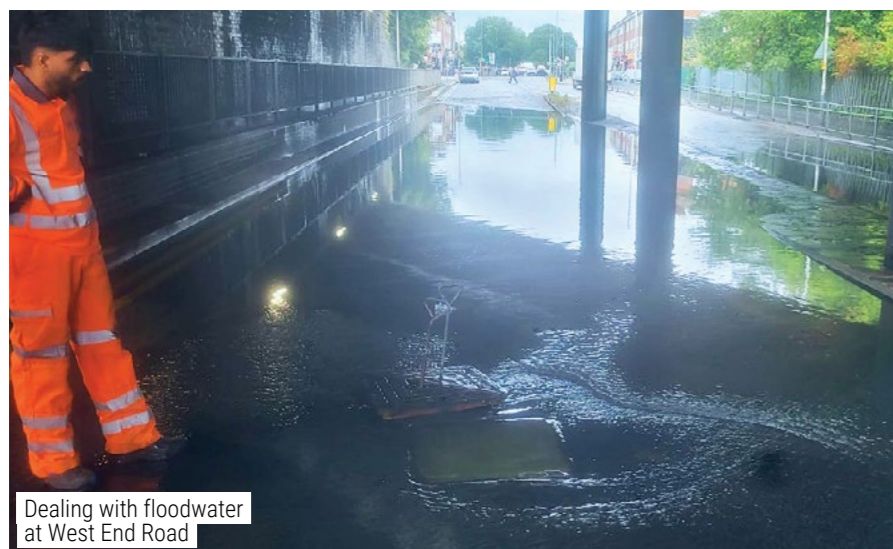
explained who to contact and where to get help for flood-related issues.

The council's highways team inspected flooded roads, from Charville Lane in Hayes, to Breakspear Road South in Ickenham, and under the railway bridge crossing West End Road at Ruislip Gardens Tube station. For some locations, road sweeping and gully cleansing helped clear the water, but in locations further from established drainage and, with already saturated ground, it was a case of simply having to wait.

In the council's parks and green spaces, flood alleviation schemes, such as those in Bessingby Park, Ruislip and Elephant Park, Uxbridge, helped to reduce the impact of rising waters on nearby homes. Both are designed to hold water on site so that it can seep away slowly over time, reducing flows and risk to properties.

The council's award-winning rain gardens installed in Field End Road, Eastcote, also ensured local businesses, previously at risk of flooding, remained unaffected.

While new measures, recently introduced by the council, around Brook Drive in Ruislip, also proved effective in minimising flooding at an area where a high number of homes have previously been at risk.



Dealing with floodwater at West End Road

Be flood prepared



The flash floods highlighted the importance of being prepared for extreme weathers, from changing travel plans to protecting your home.

Be sure to check weather warnings issued by the Met Office and watch out for flood alerts and flood warnings, which are issued by the Environment Agency in response to rising river levels.

If your home is at risk, there are simple measures you can take to better protect it against rising water levels:

- ✓ block doors and air vents with plastic sheets and duct tape
- ✓ store drinking water in clean containers
- ✓ turn off gas, electricity and water supplies (if you can safely)
- ✓ have a 'grab bag' available if you need to live in a different part of the house or move somewhere else temporarily
- ✓ purpose-designed flood protection products are much more effective than traditional sandbags, which water can seep through quickly and are often contaminated, once used.

You can report flooding at www.hillingdon.gov.uk/flooding, but if you're reporting surface water on a highway, it's worth noting that our gully pits collect water and hold it before releasing it slowly. In times of heavy rain, these pits can fill and lead to surface water flooding, which will usually recede on its own once the rain stops.

Never drive through floodwater. It only takes a few inches of water to float a car, so always seek an alternative route where possible.

Different organisations are responsible for different areas when flooding occurs, such as Thames Water being responsible for sewers, or the Environment Agency in the case of rivers. Issues should be reported to these organisations in the first instance.

A plan to manage flooding

Between January and March this year, the council consulted on its updated Local Flood Risk Management Strategy.

This document sets out information on local flood risks relating to surface water run-off, groundwater and ordinary watercourses, and how the council plans to reduce the flood risk associated with these sources of flooding.

It also details how the council will adopt a collaborative approach with other responsible authorities, such as the Environment Agency and Thames Water, to ensure that flood and

water management within Hillingdon is detailed in a single document.

- The strategy also sets out:
- current and future flood mitigation/alleviation projects
 - how these projects can create opportunities
 - how local communities can reduce local flood risk and report flooding.

The revised document, incorporating residents' feedback, was formally adopted by the council in June and will continue to be regularly reviewed and updated.



Cllr Eddie Lavery, Cabinet Member for Community and Environment, said:

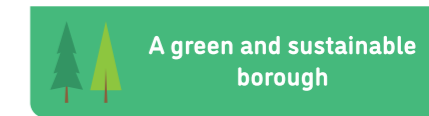
"We're very proud of how quickly and effectively the council's teams dealt with a broad range of issues, under very challenging circumstances.

"The frequency of such weather events is expected to increase with changing climates, which is why we've been taking steps to try and minimise risk to households in the borough, through flood alleviation and sustainable drainage schemes.

"We have a Flood Risk Management Strategy, which outlines how we'll work with partners to address short-term issues, and measures we're taking to future-proof the borough in the longer term.

"Right now, we will look at where these most recent floods caused issues and investigate why that has occurred. We will learn from what we've done well, and see where we can improve things, to ensure we're doing all we can to keep residents safe."

Find out more and read the council's Local Flood Risk Management Strategy at www.hillingdon.gov.uk/flooding



Delivering a thriving economy

In collaboration with the local community, the council has created a new vision for Uxbridge to make it an even better place to live, work and do business.

Uxbridge is a vibrant town with a rich heritage, featuring award-winning green spaces, diverse businesses, and leisure activities.

During the past 20 years, many town centres, including Uxbridge, have faced challenges threatening their viability. To address this, the council has created a new draft vision based on last year's community engagement.

It will support the Local Plan and aims to rejuvenate the town centre by encouraging private investment, diversifying shopping and leisure options, redeveloping disused sites, exploring potential



for new housing, and improving connectivity to residential areas.

During the initial engagement and research, residents, businesses and other stakeholders identified four key themes that would improve the town centre:

- **public realm improvement** – creating new spaces to attract visitors and support businesses.
- **new activities** – introducing pop-up shops, collaborative workspaces, and exhibitions.
- **better links** – improving connections to surrounding areas.
- **more town centre living** – offering a mix of high quality housing options.



Vision for the future

The vision includes various short and long-term projects to tackle issues deterring people from spending more time in the town centre. The council will collaborate with partners to find creative solutions and seek funding for larger projects.

► Building economic resilience

– increasing vacancy of retail and commercial units. The town centre needs to adapt to changing economic needs and give people more reasons to visit.

How we are going to do this?

- Support the office market at the heart of the town centre.
- Address gaps in the current offer, such as night-time activities, and experience-based commercial offers.

► Serving local communities

– the high street is dominated by chain retail and is less appealing to

groups, such as students and those who do not drink alcohol. It needs to better serve residents' daily needs.

How are we going to do this?

- Establish the Civic Centre as a community hub and explore new ways to use the building and forecourt.
- Provide new housing in the heart of the town centre and attract developers.

► Enhancing the environment

– provide more options to travel to and from the town centre, expanding connections to surrounding green spaces and improve public spaces and increase accessibility.

How are we going to do this?

- Improve walking, bus and cycling routes.
- Restore connections to the canal, local parks and other sites, such as the Battle of Britain Bunker.

What's happened so far and next steps

Research and engagement activity conducted by Brunel University London

- More than 1,000 people spoken to via interviews, focus groups, walkalongs, drop-ins and an exhibition.
- Meetings with key stakeholders, landowners and local groups.
 - Initial findings from social media, council officers and local evidence.

Draft vision considered by council's Cabinet (October 2024)

Further engagement (Until February 2025)

Adoption by Cabinet (May 2025)

Funding and delivery approach to be agreed (Autumn 2025)

Start delivery of larger interventions (2026)

*Dates are indicative and could be subject to change.

Residents are invited to share their views on what is included in the draft vision to help inform its delivery and applications for funding.

For more information on the vision, our in-person engagement events and to find out how you can help shape it, visit www.hillingdon.gov.uk/uxbridge-vision later this month.



A thriving economy

Boosting businesses and skills

Businesses across Hillingdon are receiving support thanks to funding secured through a government investment programme.



Projects funded by the UK Shared Prosperity Fund (UKSPF) are being delivered in Hillingdon across four strands of work, helping us to grow healthy, happy communities and a strong, thriving economy. They are:

- communities and place
- supporting local business
- people and skills
- supplier readiness.

Cllr Steve Tuckwell, Cabinet Member for Planning, Housing and Growth, said: "We believe Hillingdon is the new business capital of London with recent figures showing more business have started here in the past year than anywhere else in London."

"We're proud to be home to richly diverse businesses, from multi-million-pound tech companies to unique sole traders and start-ups, which all contribute to the borough's economic wellbeing. "There's some great support available here to help those smaller businesses build and grow, so it's fantastic to see some of that already being converted into local successes."

Help for businesses to develop and grow

The council's UKSPF work began earlier this year, with the first projects focusing on supporting local businesses. A dedicated support programme, called GROWTH Hillingdon, is being delivered by Hillingdon Chamber of Commerce on behalf of the council, and to date, 66 local businesses have registered and 46 of those have already started the programme.

More than 150 businesses have expressed an interest in the GROWTH Hillingdon business

support programme and are in different stages of their journey.

Nine businesses have completed two sessions with a specialist business mentor, and two businesses have already experienced successes, with one securing a £500,000 contract and the other opening a brand-new store.

The winner of that lucrative new contract was Uxbridge-based artificial intelligence software company, Neon AI Limited. **Chief Executive, Prodipto Kumar 'PK' Das** (pictured right), created the



learning and development tool, Neon AI for corporate settings and Neon Edu, for schools. He credits the company's recent success to the GROWTH initiative.

He said: "The programme offered access to tailored business support that was instrumental in refining Neon AI Limited's business strategy. With one-to-one mentoring, participation in peer group sessions, and insights from industry experts, the support helped Neon AI Limited navigate challenges and seize growth opportunities."

Employment and training support for residents

As well as supporting borough businesses, the council's UKSPF investment has also been used to provide an employment support programme.

It is designed to help residents find jobs directly or support their ongoing efforts by improving skills or training.

The project is being delivered for the council by Seetec Plus, an employment and skills training specialist working with unemployed adults.

Among those to have benefited from the scheme was chef, **Harshdeep Singh Anand** (pictured above right), who came across an advert for the programme via a Hillingdon Facebook community group.

He'd been struggling to find long-term employment since the COVID-19 pandemic, with the job market shrinking and changes in the way restaurants

hired. Working with Seetec's employment engagement advisor, the team helped Harshdeep tailor his CV and gave him extensive interview practice to build his confidence.

Several applications later, he landed an interview for a sous chef position at the five-star London Hilton in Park Lane, Westminster, and he was later offered the role, starting in September.

He said: "I was lucky to have found the UKSPF advert when I did. I was getting desperate looking for something stable."

"But the council's team has been exceptionally helpful and now I have also made friends for life."



To find out more about the UKSPF and how it could help you or your business grow, visit www.hillingdon.gov.uk/ukspf



A thriving economy

Creating more affordable housing

As part of efforts to tackle the housing crisis locally, the council is continuing to provide much-needed housing for residents. *Hillingdon People* takes a look around some of the newest schemes.

Like all local authorities, we are continuing to see an increased demand for affordable housing because of rising purchasing, renting and living costs, landlords selling properties, and developers with planning permission stalling on the construction of new homes. To help meet this need, in the council's budget for 2024/25, a commitment was made to increase the number of homes it purchases for affordable renting for the year, from 100 to 300. We are now halfway towards this vision, with more than 150 affordable homes acquired. This is alongside a wider three-year plan to obtain 500 additional homes.



Purchasing affordable homes

Purchasing properties is an effective way to increase housing stock, and one of the ways the council does this is through its Housing Buy-back Scheme. The initiative is open to homeowners, landlords and family members of property owners in the borough, offering market value to buy or lease homes that have become permanently or long-term vacant. Since the start of the financial year, more than 50 residential properties have been identified and are currently in the process of being purchased as part of this scheme. If you are a homeowner looking to sell a home in Hillingdon, you can find out more at www.hillingdon.gov.uk/buy-back-scheme.

The September/October edition of *Hillingdon People* announced the council's acquisition of a large site,



The exterior of Cavenham Court

Hyde Park Hayes 3, commonly known as HPH3 Hayes. The development on Millington Road was purchased with the support of Greater London Authority (GLA) funding in July, and quickly boosted the council's stock by 113 homes. Since then, the building has been prepared for residents to move in, including **Jasraj (Jas) Deol** (pictured above), a 23-year-old living on his own for the first time.

The family of five had been living in an overcrowded two-bed flat for 16 years on the Avondale Drive estate in Hayes. As part of the decant process, while the estate is being redeveloped, council officers had to explore a way to quickly find a suitable property for the family to overcome the overcrowding issue. With a significant lack of four-bed homes available a household split was presented to the family, meaning the oldest child Jas was offered a one-bed home at HPH3, Cavenham Court, after he completed the relevant financial affordability checks.

The rest of the family have remained on the estate and will move into a three-bed property on the new site when phase one is completed.

Jas said: "Living with my parents and siblings was becoming very

overcrowded and claustrophobic. At first, I didn't know what a household split meant, but the estate regeneration team were great at explaining it in detail and the steps I'd have to take.

"Moving to Cavenham Court has been fantastic, everything is brand new, it feels secure and it's a convenient location. I've lived in Hillingdon my entire life and love that I can remain close to my family.

"I've gained my own independence, and without the council's support I wouldn't have been able to achieve that.

"This process has also had a positive impact on my family, they now have more space between them while they wait for their move. I'm very grateful for the support offered to us by the council."



A kitchen in one of the properties

Building new homes

Another way in which the council is bolstering its stock is by building new homes.

Work is well underway on the delivery of more than 800 homes, including the redevelopment of the Hayes Town Centre and Avondale Drive estates, which is set to provide 740 new properties (50 per cent affordable).

In addition to this, work is set to soon begin on 45 homes on the former Yiewsley Swimming Pool brownfield site at Otterfield Road, and shortly after on a further 50 on nearby Falling Lane. All 95 properties on this site will be affordable.

Furthermore, on Wednesday 16 October, Cllr Eddie Lavery, Cabinet Member visited the site of the former Maple and Poplar day care centre and care home in Hayes to celebrate the completion of a new, high quality development



Silverleaf Court on the former Maple and Poplar site

which will provide an additional 34 modern social homes for residents.

The properties are built in two blocks of 17 with solar panels fitted

on the roof to help reduce energy costs, cycle storage, and a central car park which includes parking bays with chargers for electric vehicles.

Eligible residents have been contacted by the council and will begin to move in soon.

Additionally, the council recently secured the former St Andrews RAF residential site on Grays Road, Uxbridge, which has not been in use since the 90s, for future redevelopment, including the delivery of affordable homes, subject to planning permission.



Cllr Lavery outside the new properties on the former Maple and Poplar site in Hayes

Cllr Lavery said: "Purchasing properties means we can quickly make more homes available to residents in need, while longer term construction projects allow us to repurpose brownfield land into much-needed housing. "Increasing our housing stock means we can reduce our reliance on expensive temporary accommodation. However, we must be clear that new properties are allocated to residents with the highest need and our most vulnerable. Many residents who join our housing register could wait more than 10 years for a home. "If you are worried about your housing situation or feel at risk of homelessness it's important to act immediately. The council can provide support to find an affordable home in the private rented sector, with more information available at www.hillingdon.gov.uk/housing-advice."

Sign up for our tenant and leaseholder newsletter

This year, the council launched a new quarterly e-newsletter for its tenants and leaseholders to share important news and information, including updates about ongoing improvement works.

It also provides residents with opportunities to get involved.

If you're a council tenant or leaseholder and haven't yet signed up, register today by visiting www.hillingdon.gov.uk/enews and selecting 'Housing News' as a topic.



Can you help Hillingdon to climb up the recycling charts?

The council has launched a new campaign to encourage residents to continue to reduce contamination levels in their household recycling.

The campaign aims to further reduce contamination by asking residents to just 'take two seconds to check your recycling' and make sure the contents of their clear dry mixed recycling bags can all be recycled through the council's kerbside collections.

Contamination occurs when items which can't be recycled, such as clothing, are put out for recycling in residents' clear bags. The contamination rate in Hillingdon for dry mixed recycling is currently around 15 per cent, which matches the average rate for London, however the council's ambition is to improve this.

The council's campaign is visually inspired by *Top of the Pops* style music chart countdowns, listing the top five contaminating items found in dry mixed recycling: crisp packets, batteries, nappies and sanitary products, clothing and textiles, and food items.

If too many contaminating items are present, it is not always possible to remove them all at the sorting facility and can lead to an entire load of recycling being rejected and going in general waste instead. This is bad for the environment and means the good quality recycling is not repurposed.

Some items in recycling, particularly batteries hidden in objects like Bluetooth headphones, old mobile phones and electric toothbrushes can actually be dangerous, as they can risk starting a fire if caught up in processing machinery.

The council's waste and recycling team routinely monitors



the contents of recycling bags for contaminating items. As part of the campaign, households which continue to contaminate will be offered educational advice to address the issue.

In the new year, the council will also launch a special version of the campaign tailored to engaging school pupils and families with children.

To find out more about recycling in Hillingdon, visit www.hillingdon.gov.uk/dry-mixed-recycling.

Watch our recycling video

Watch our recycling video to discover how you can become a recycling rockstar and make sustainability a hit in Hillingdon at www.hillingdon.gov.uk/dry-mixed-recycling.



5 CRISP PACKETS



4 POLYSTYRENE



3 SANITARY PRODUCTS



2 TEXTILES AND SHOES



1 FOOD WASTE



Recycle right this Christmas

Dry recycling

Recycle cards, wrapping paper (without glitter or foil), books, magazines, cans, glass, cartons, and plastic bottles. Remember, items



with glitter or foil go in your black waste sacks as they can't be recycled.

Christmas trees

Recycle your real Christmas tree with our garden waste collections. Ensure it's visible to crews and placed at the edge of your property on collection day. Remove all decorations and cut trees over six feet in half.

For flats, collections are available from Monday 6 January to Friday 17 January. Email wastesupervisor@hillingdon.gov.uk to arrange. Place trees next to your bin store without blocking access.



The greener way to dispose of your old gadgets

Many of us will be fortunate enough to receive new phones, tablets, computers, or other electronic gadgets in our Christmas stockings.

If so, why not donate or gift your still-working older items to someone who could use them? You can now recycle any small gadgets that no longer work at Hillingdon's libraries. Find out more at www.hillingdon.gov.uk/small-electricals-recycling.

Larger items, such as vacuum cleaners and televisions, can be taken to Harefield Civic Amenity Site, or the West Drayton waste weekends at Tavistock Road. Find out more at www.hillingdon.gov.uk/harefield-civic-amenity and www.hillingdon.gov.uk/waste-weekends.

Christmas and New Year recycling collections

See page 2 for waste and recycling collection changes during the Christmas and New Year period.

Reduce your waste by recycling food too

In the UK, approximately 9.5 million tonnes of food waste is produced each year.

Some food waste is unavoidable, inedible items like eggshells, banana skins, tea bags or animal bones.

However, huge amounts of edible food is also wasted, often due to today's busy households where planning meals can be difficult, and food can reach its best before date before you know it.

Our waste and recycling team has recently been knocking on residents' doors to promote the council's free food waste collection service. It's simple to use and can make a big difference in reducing your overall household waste.

So far, more than 54,600 households have signed up to the service, with 15,000 of those recently joining because of this initiative.

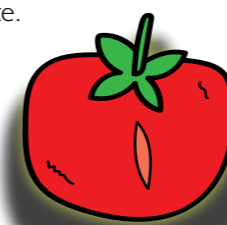
Here are some tips on reducing your food waste:

- ✓ freeze leftover gravy in an ice cube tray
- ✓ make a soup with leftover vegetables
- ✓ put any leftover meat in a pasta dish
- ✓ make mince pie ice cream
- ✓ keep your fridge between 0 and 5 degrees to keep food fresh for longer.

Food waste should be put in your outdoor green food waste bin. Remember to put this out on the boundary of your property by 6am on your normal collection day.

If you need more food waste caddy liners, you can order them to be automatically delivered to you at www.hillingdon.gov.uk/automatic-bag-delivery-scheme.

Sign up for our free food waste collections at www.hillingdon.gov.uk/food-waste.



Cllr Eddie Lavery, Cabinet Member for Community and Environment,

said: "When it comes to recycling, we're lucky to have very engaged and enthusiastic residents.

"However, some items that can't be recycled still find their way into clear recycling bags. We appreciate many people are short on time, so we're simply asking that residents 'just take two seconds to check' the items in their clear bag can be recycled."

Change to winter garden waste collections

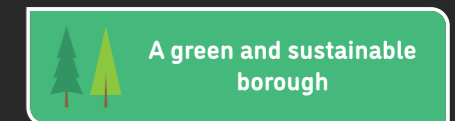
Data gathered during the past three years has shown a distinct drop off in the tonnage of garden waste collected during the winter months, by on average, more than 50 per cent.

To reflect the reduced need, the council is moving from weekly to fortnightly free garden waste collections from December to February, which will also reduce its carbon footprint with fewer vehicle journeys and emissions on our roads, and ensure the service remains efficient and cost-effective.

There won't be a change to residents' collection days, just the frequency, and you will still be able to look up your collection schedule online or report missed collections.

Residents with large amounts of garden waste will still be able to drop off unlimited garden waste, for free, at our civic amenity sites in New Years Green Lane, Harefield and Tavistock Road, West Drayton. Find out more at www.hillingdon.gov.uk/waste-and-recycling-centres.

Find out more about waste and recycling at www.hillingdon.gov.uk/rubbishandrecycling



Celebrating the outstanding achievements of children in care

There are currently 347 children in the council's care in Hillingdon. We spoke to two university graduates who told us about the vital support they received from their foster families, and attended an awards ceremony to celebrate the accomplishments of our kids in care.

Supporting their future ambitions

The council provides a range of support to ensure that children in care are safe and supported towards independence, including access to the best possible education, financial advice and health services.

Hillingdon's dedicated 'virtual school' helps with educational support, such as finding a school, preparation for tests and exams, and guidance on further education and careers.

Children are also given a personal education plan to identify their individual learning needs, and a children's health team offers advice

on issues, such as healthy eating, relationships and mental health.

Once children turn 18, or are no longer in care, they will continue to receive help from a personal advisor, which may include support to find somewhere to live; including a setting-up-home grant of up to £3,000 per person, funding towards travel costs, and help finding a job or university placement.

The council's 'Staying Close' initiative provides stable accommodation and comprehensive support to care-experienced young people, aged 18 and above, who are leaving residential or supported living placements.

All accommodation is based within the borough, ensuring

our young people can maintain their local connections.

Each young person has a named key worker where they receive 10 hours of direct support per week. Their key worker is responsible for facilitating personal and skills development, financial guidance, and ensuring they receive the support they need.

Other help covers independent living skills, including cooking sessions, mental health and wellbeing support, access to a free gym membership for local leisure centres, and education and employment opportunities.

For more information, visit www.hillingdon.gov.uk/care-leavers.

Foster carers helped us succeed

The council needs more foster carers to look after children in need and guide them to reach their full potential.

We spoke to Alex and Helia, who told us how their foster families helped them overcome challenges to succeed at university.



Helia

Helia, aged 25, graduated from Kingston University with a first-class degree in Biomedical Science. She arrived in the UK aged 15 and was placed with a local foster care family.

She said: "Overcoming the language barrier was challenging and everything was new to me. My foster family helped me to understand British culture, like drinking tea and eating buttered toast, and they registered me for high school.

"We always ate dinner together as a family and I had the privacy of my own room. It felt like home. My foster mum helped me to remain focused on my education and personal growth, which led me to become who I am today."



Alex

Alex (pictured above right), aged 23, arrived in Hillingdon from Angola when he was 13 years old. He continues to live with his foster family and has just completed a media degree from Brunel University London.

He said: "When I first came here I had a language barrier, but my foster carers worked hard to push for me to go into mainstream school, which then allowed me to go to college and university.

"They support me with everything – they have given me a home, they have given me stability and they have helped me follow my dreams. That means the world to me."



Cllr Susan O'Brien, Cabinet Member for Children, Families and Education,

said: "We are committed to ensuring that all children in our care receive the best possible opportunities to reach their full potential and thrive.

"We really need more foster carers to give a loving home to these children who have not had an easy start in life and support them to achieve their goals. We offer the best foster care package in England, so please do get in touch to find out more."

To find out more, visit www.hillingdon.gov.uk/fostering



Celebrating success at KICA

In September, the council's annual Kids in Care Awards (KICA) ceremony recognised the outstanding accomplishments of care-experienced children and young people in the borough.

More than 400 children, carers and friends attended to celebrate young people who have overcome a difficult upbringing or challenging circumstances to make an outstanding achievement in their lives.

Hosted at Stockley Marquee on the Stockley Park golf course, the awards were presented by the Mayor of Hillingdon, Cllr Colleen Sullivan; Cllr Heena Makwana, and three care-experienced young people.

The event recognised excellence in education, moving into independent living and being involved with the Children in Care Council, and commended qualities, such as resilience, kindness, strength and determination.

Children enjoyed activities, such as bracelet making, football, darts, 'stay and play', bouncy castles and henna art. All winners received certificates and medals, with one young person saying: "It was 10 out of 10 – the best day ever!"



Council staff welcome attendees



Emma Kavanagh and Cllr Makwana with Satinder and Jagmohan Gill (centre) who were honoured for 15 years' service

Carers honoured for their dedication

The council recognised the outstanding efforts of its foster carers at an awards ceremony on Friday 11 October at the Battle of Britain Bunker Exhibition and Visitor Centre, Uxbridge.

At the Foster Carer Appreciation Event, carers with a total of 120 years' fostering experience were presented with awards by Cllr Heena Makwana, Chairman of the council's Children, Families and Education Select Committee, and Emma Kavanagh, the council's Assistant Director for Corporate Parenting and Fostering.

Could you welcome a child into your home?

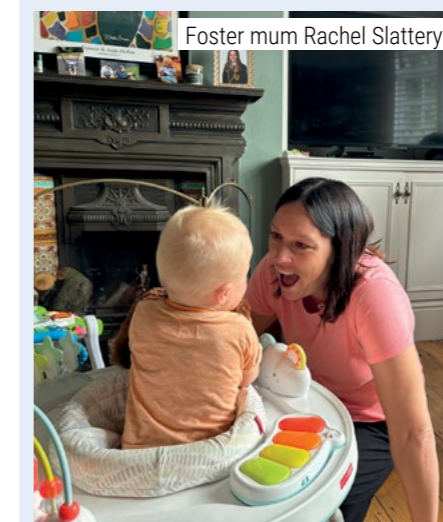
Foster carers are needed now more than ever. As a foster carer with Hillingdon, you can:

- earn up to £1,500 a week
- receive 25 per cent off your council tax bill
- obtain £1,000 off your utility bills and a winter fuel allowance

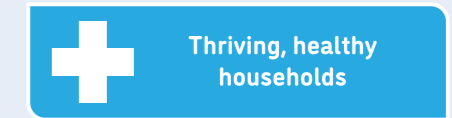
- enjoy free Platinum Merlin passes for the whole family to the UK's biggest and best attractions, including Alton Towers
- gain access to more than 100 training courses, plus around-the-clock support.

Watch our video

Our latest foster carer video at www.hillingdon.gov.uk/fostering-story-rachel-damian features foster parents Damian and Rachel Slattery, who share their real-life experiences of fostering with Hillingdon.



Foster mum Rachel Slattery



Enhancing your online services

The council is investing £9 million on digital technologies to improve the way residents access services.

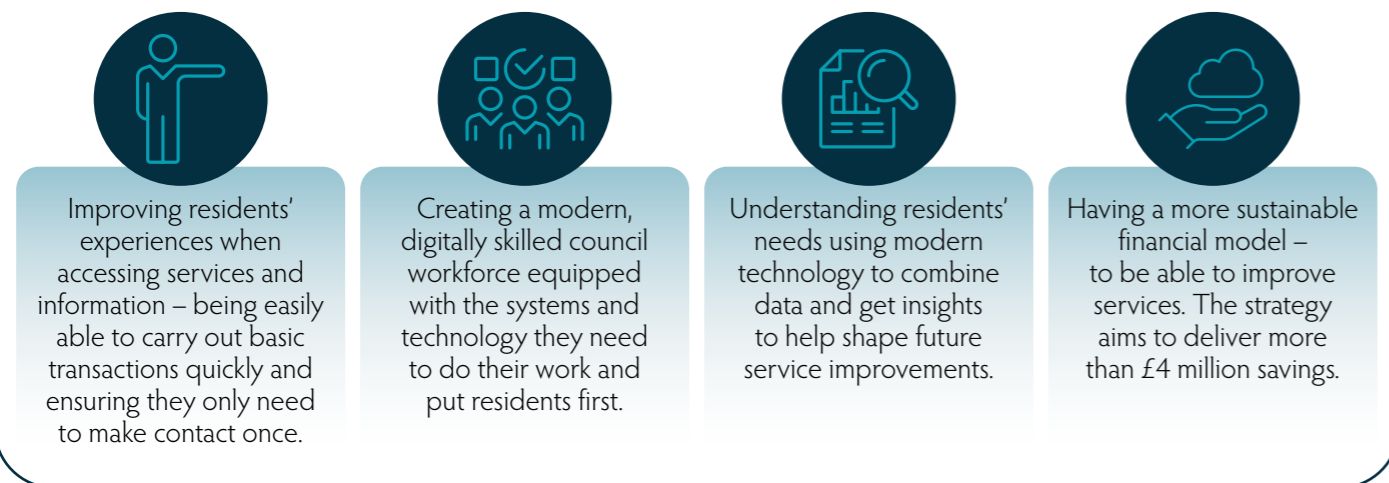
In October, the council's Cabinet agreed a new Digital Strategy, which builds on previous successes, and sets out an innovative vision for the next three years to adopt and embrace new technology to be more efficient and make it easier for residents to access council services.

The strategy sets out four main principles to deliver the vision:

- prioritising residents' needs
- carrying out an agile approach to delivery

- delivering new business models driven by data
 - adopting a 'One Council' approach by creating project teams and shared goals.
 - supporting residents who are unable to use technology
 - making its digital infrastructure more modern and reducing the number of applications
 - quickly adapting to hybrid working
 - improving digital connectivity across the borough by increasing bandwidth at council sites to give residents better access to the internet.
- The council has already made great strides in its digital journey by:**
- becoming the first in the country to introduce an automated voice and web chat function on its phone lines and website

Four measures of success



Some of the ambitions for the future



Supporting you to get online

The council took part in this year's 'Get Online Week' (Monday 14 to Sunday 20 October), an annual digital inclusion campaign led by the Good Things Foundation charity, to encourage more people to use the internet as part of their daily lives.

Following a successful bid to the foundation earlier this year, the council received 40 laptops to give to residents on low incomes who want to do more online, but do not have access to a device.

Senga Karst (pictured below), aged 75, from Northwood, received one of the laptops as part of the initiative. She said: "I was pleasantly surprised when this opportunity was offered to me. Having access to the laptop and the training on how to use it will make it a lot easier to access

council services, such as applying for parking permits, and engaging with council meetings and consultations.

"The laptop also means I can stay connected with my family, which is a real bonus.

"I recommend other residents, especially older people, to get involved and start learning about how to get online and the benefits."

During the week, the council also ran drop-in sessions and digital skills classes at libraries and Uxbridge Adult Education Centre to support residents having day-to-day issues with technology and promote the wealth of digital courses on offer throughout the year.

To find out more about our digital inclusion schemes, visit www.hillingdon.gov.uk/digital-everyone.



As part of the National Databank project, our libraries are also working with the foundation to provide SIM cards and/or monthly mobile top-ups to people in data poverty to help them get online access without the worry of paying for mobile data. Find out more at www.hillingdon.gov.uk/national-databank.



Leader of the Council, Cllr Ian Edwards, said:

"While we have, to date, already made a host of digital improvements, this new strategy and investment of £9 million in digital technologies will significantly propel our vision of being a more digital council into reality and immensely improve our resident, visitor, business and staff experience.

"The document is designed to drive the transformation of services to continue to meet the changing needs and expectations of our residents, and allow people to transact with the council quicker and more effectively."

To view the strategy and for support getting online, visit www.hillingdon.gov.uk/digital-everyone

A digital-enabled, modern, well-run council



BE AMAZED

Visit the historic Battle of Britain Bunker. The secret heart of Britain's air defence where ordinary men and women did extraordinary things.

Wren Avenue, Uxbridge
 battleofbritainbunker.co.uk
 01895 238154



THE
**BATTLE OF
 BRITAIN
 BUNKER**



Support for all the family in the heart of your community

Our family hubs offer a wide range of services for all expectant parents and children 0-19, and up to 25 with Special Educational Needs and Disabilities.

Find out more at
www.hillingdon.gov.uk/family-hubs



Thriving healthy households

www.hillingdon.gov.uk/family-hubs

Keeping our communities safe

From proposing restrictions to prevent nuisance taxi parking in residential roads, to obtaining closure orders to tackle persistent issues at properties and addressing vandalism of ULEZ cameras, the council continues to combat anti-social behaviour (ASB) and crime.

Preventing nuisance airport taxi parking

The council recently consulted on proposals to introduce a new Public Spaces Protection Order (PSPO) to ban taxis and private hire vehicles from waiting in residential streets when collecting passengers from Heathrow Airport.

Many residents have reported inappropriate behaviour by drivers, including blocking access to properties, public urination and defecation, and verbal abuse, with the council issuing 475 Fixed Penalty Notices last year.

The proposed PSPO would give the council additional powers to ban specific behaviours that negatively impact the community. Unlike traditional parking restrictions, the PSPO would allow for remote enforcement using fixed and mobile cameras, making it easier to issue penalties. Breaching the order could lead to fines or prosecution for repeat offenders and those who fail to pay the fines issued.



The feedback from the consultation is now being used to shape the final document which will be considered by the council's Cabinet in the new year. If introduced, it will cover three wards surrounding the airport: Heathrow Villages, Pinkwell and West Drayton.

Read the proposed PSPO in full at www.hillingdon.gov.uk/heathrow-pspo-consultation.

Council leads taskforce to tackle ULEZ camera vandalism

Since the expansion of the Ultra Low Emission Zone (ULEZ) to outer London, boroughs have seen a spike in vandalism targeting Transport for London (TfL) enforcement equipment.

In Hillingdon, incidents have included damaging ULEZ cameras, and tampering with traffic lights and pedestrian signals.

This criminal activity endangers lives, especially those of vulnerable road users, and disrupts traffic flow. The risk is exacerbated when TfL, which is solely responsible for repairs, face delays. Additionally, there have been reports of ASB towards contractors working on traffic signals.

In August, Leader of the Council, Cllr Ian Edwards, and Cllr Jonathan Bianco, Deputy Leader and Cabinet Member for Corporate Services and Property raised the matter with the TfL Commissioner, Andy Lord.

To urgently address the issue, the council has formed a taskforce involving council officers, TfL representatives, and the police to develop an action plan to catch and prosecute those responsible.

If you witness vandalism of this nature, report it immediately to the police at 101.

Damaged traffic signals and ULEZ cameras should be reported to TfL at tfl.gov.uk/help-and-contact/contact-us-about-streets-and-other-road-issues.

Stopping persistent ASB

In August, the council secured two closure orders following reports of serious incidents of ASB, criminal activity and drug use linked to properties in the borough.

The orders were granted by Uxbridge Magistrates' Court under Section 80 of the Anti-Social Behaviour, Crime and Policing Act 2014, on Wednesday 7 and Wednesday 14 August.

The first was granted for a council-owned property in Uxbridge after the court reviewed statements from the council, police and witnesses about incidents, including a stabbing, drug dealing, noise, public disturbances and fly-tipping.

The second order involved a property owned by the not-for-profit housing provider, Notting Hill Genesis, in South Ruislip. Reports from the council and police highlighted theft, drug dealing and use, property damage and persistent ASB by the tenants and visitors.

Under these orders, access to the properties is restricted for three months, with only the landlord, police, emergency services, or utility providers permitted entry. Anyone else who enters or stays on the premises, without a reasonable excuse, can be fined, imprisoned or both.

How and where to report crime and ASB

Keeping residents safe is a job that's shared by the council and the police, with each organisation having different responsibilities and powers.

For the full list of ASB issues investigated by the council, visit www.hillingdon.gov.uk/safety and report issues at www.hillingdon.gov.uk/report.

Report criminal activity to the police at www.met.police.uk. If someone is in immediate danger, or a serious offence is occurring, call 999. For non-emergencies, dial 101.



Safe and strong communities



GET VACCINATED. GET WINTER STRONG.



Flu and COVID-19 can be serious.

People most at risk of serious illness are invited to get a free **COVID-19 and/or flu vaccine** to protect against these viruses over the colder months.

Those over 75 and people more than 28 weeks pregnant can also have their **RSV vaccine** this winter.

To check your eligibility, visit:
nwlondonicb.nhs.uk/winter



Policing update from Inspector Laura Flowers

As we enter the winter months, crime in Hillingdon remains relatively low, with continued reductions in incidents like vehicle theft, violence and hate crime. However, we anticipate seasonal increases in certain types of crime as the nights draw in and festive activities begin.

Local initiatives to enhance safety

To counter potential increases in crime, your local police teams are implementing several proactive measures. These include:

- **Ask for Angela:** Licensed venues are equipped with training and signage, allowing individuals who feel unsafe to discreetly request help from staff by 'asking for Angela.'
- **Volunteer police cadets:** Cadets have been conducting compliance checks at various locations, attempting to purchase alcohol and vapes. Fixed Penalty Notices and warning letters were issued where sales were made to minors.

- **Spiking awareness:** Awareness sessions were held at Brunel University London and local hotels, as part of Operation Rana, aimed at educating the community about drink spiking.
- **High visibility patrols:** Officers are conducting patrols in areas experiencing a spike in crime, and this initiative will continue throughout the winter evenings.

A New Met for London update

On Tuesday 1 October, we held our third event at the Crown Conference Centre in Ruislip. Chief Superintendent Wilson and Inspector Fox shared updates on our reform priorities, focusing on community crime fighting, cultural transformation and fixing our foundations.

For further details on our plans, visit www.met.police.uk/notices/met/a-new-met-for-london and if you are interested in joining the Metropolitan Police, search 'Met careers' online.

Update on Online Watch Link (OWL)

Recently, Hillingdon Police transitioned from OWL to the national Neighbourhood Watch Network (NWN) for crime prevention updates.

- To join NWN and keep receiving updates, follow these steps:
- Visit members.ourwatchmember.org.uk/join.
 - Enter the six-digit code received via email.
 - Select your home address and recommended message providers.
 - Create a password and complete registration.

CCTV Watch members should tick "I have CCTV" under "Interests & About You" > "Security Surveillance".

OWL members must register with NWN to continue receiving police updates.

Thank you for your continued support in keeping Hillingdon safe.

Inspector Laura Flowers,
Partnership and Prevention

An update from the London Fire Brigade

Hillingdon's London Fire Brigade (LFB) crews have had a busy few months working to educate and inform local communities on how to stay safe from fire. Crews have attended a variety of local events, including fêtes, festivals, charity football matches, care facilities, and schools to spread the word on fire safety. They have also given presentations at the council's assemblies for older adults and individuals with disabilities.

In addition to community engagement, the borough's fire crews have participated in multiple training exercises with local partners, including the council, police, NHS, HS2, Heathrow Airport and RAF Northolt, as part of the borough's resilience training to ensure we are prepared for significant incidents.

Enjoy fireworks safely

As firework season begins, we want to highlight the importance of safe usage to prevent accidents. Fireworks and sparklers are hazardous if not handled properly. LFB recommends

attending professionally organised displays instead of setting off personal fireworks.

For those hosting their own displays, tips include using only CE or UKCA-marked fireworks, reading instructions carefully, lighting them at arm's length, and standing back.

Safety around bonfires is equally crucial: bonfires should be built away from buildings and trees, supervised until fully extinguished, and kept clear of flammable materials.

Find out more at www.london-fire.gov.uk/safety/fireworks.

Danger of e-bikes and e-scooters

We also want to raise awareness about the risks associated with electronic powered personal vehicles like e-bikes and e-scooters.

In the capital, in 2023, on average there was a fire from a lithium battery in an e-bike or e-scooter every two days. Fires are often caused by faulty chargers, damaged batteries, or counterfeit products.

These vehicles should never be charged in escape routes or

communal areas, as the rapid spread of a battery fire could block escape routes and endanger lives. LFB's #ChargeSafe campaign aims to educate the public on safe practices for charging and maintaining these devices. Find out more at www.london-fire.gov.uk/safety/lithium-batteries.

Fire safety at home

Finally, we encourage you to take proactive steps to ensure fire safety in your home by using our online Home Fire Safety Checker.

This tool helps identify common fire risks and offers personalised advice to reduce hazards. One of the most important ways you can protect your loved ones is by installing and maintaining working fire alarms. Find out more at www.london-fire.gov.uk/safety/the-home.

Paul Eastland,
Borough Commander

HILLINGDON WHAT'S ON?

Find out about more events happening locally at *discover.hillingdon.gov.uk/events*.



CHILDREN AND FAMILIES

WOODLANDS CENTRE

CHRISTMAS CRAFT MAKING SESSIONS

Selected Saturdays in December

The Woodlands Centre at Ruislip Lido is holding various events for children aged four and above, including Christmas craft making sessions, wildlife walks and family fun activities in Ruislip Woods.

Cost: Free.

To book, visit discover.hillingdon.gov.uk/events or call Diana on 07736 974497.

NORTHWOOD METHODIST CHURCH HALL

CHRISTMAS CRAFT MARKET AND SANTA'S GROTTTO

Saturday 7 December, 10am to 3pm

Santa will be in his Grotto with magic tricks, plus hands-on crafts for children to make and take home, and handmade crafts to browse and buy.

No booking needed. Find out more at www.northwoodcraftmarket.co.uk.

BATTLE OF BRITAIN BUNKER

PIPSQUEAKS! TODDLER STORY SESSIONS

Friday 20 December, 10.30am to 11.30am

This activity is created for children aged 18 months to three years, but younger babies welcome. Make new friends and sing along to your favourite nursery rhymes. Session includes entry to the visitor centre.

Cost: £2.50 per child – maximum two accompanying adults, free. To book, visit battleofbritainbunker.co.uk/whats-on.

OAK FARM LIBRARY

NEW YEAR'S EVE WREATH MAKING EVENT

Saturday 28 December, 10.30am to midday

Children aged six to 11 are invited to a free New Year's Eve wreath making event.

Cost: Free.

To book, visit discover.hillingdon.gov.uk/library-events.

LEISURE

GUTTERIDGE WOODS

COPPICING IN GUTTERIDGE WOODS

Saturday 23 November, 10.30am to 1pm

For National Tree Week, join Hillingdon ranger, Pete, for a morning of hazel coppicing. Learn about this ancient art of harvesting wood and the benefits to wildlife. Suitable for adults, or those aged 16 to 17 years with parental consent.

Cost: Free.

To book, email psalter@wildlondon.org.uk or visit discover.hillingdon.gov.uk/coppicing-in-gutteridge-wood.

BATTLE OF BRITAIN BUNKER

SECRETS UNCOVERED TOUR

Saturday 30 November and 28 December, 10am to 11am

Discover the secret spaces of the bunker in this special guided tour. Explore objects, hidden rooms and corridors that have been closed for many years and find out more about the people who worked behind the scenes in the Battle of Britain and beyond.

Cost: £15.

To book, visit battleofbritainbunker.co.uk/whats-on.

MANOR FARM LIBRARY

COFFEE AND CRIME WITH ORLANDO MURRIN

Friday 6 December, 2.30pm to 3.30pm

Food writer and chef, Orlando Murrin, talks about his first crime novel and appearing on *Masterchef*. Murder is on the menu.

Cost: Free.

To book, visit discover.hillingdon.gov.uk/orlando-murrin.



Coppicing in Gutteridge Woods

CRANFORD PARK

ORCHARD WORKSHOPS

Wednesday 11 December, 11am

Cranford Park has a wonderful, historic orchard with more than 50 varieties of apple and pear trees in the walled garden.

These workshops run alongside the orchard project, focusing on caring for and pruning fruit trees during the winter months. All ages welcome.

Cost: Free.

To book, email pmcgarrity@hillingdon.gov.uk or visit discover.hillingdon.gov.uk/orchard-workshops.

WINSTON CHURCHILL THEATRE

A BIT OF A CARRY ON

Wednesday 11 December, 2pm

The remarkable untold story of *Carry On* actor Peter Butterworth and his wife, Britain's first female impressionist, Janet Brown. Using classic film, and television clips, personal mementos, rare photographs and letters, their son Tyler reveals the private story behind his parents' public lives.

Cost: Free for Arts Society Hillingdon members, visitors £7.

No booking needed.

EASTCOTE HOUSE GARDENS

THE 12 HERBS OF CHRISTMAS

Saturday 14 December, 11.30am to 1.30pm

Explore the fascinating herbs of Eastcote House's walled garden and discover their use in Christmas recipes of olde. Yule be amazed! Suitable for adults.

Cost: £5.

To book, visit discover.hillingdon.gov.uk/twelve-herbs-christmas.



WINSTON CHURCHILL THEATRE

BOMBING WITH BANKSY AND CO

Wednesday 8 January, 2pm

In this lecture, Arts Society Hillingdon explores the works of Banksy, quite possibly the most famous living street artist in the world, as well as street art by Ben Eine, whose piece 'Twenty First Century City' was presented by former Prime Minister David Cameron to Barack Obama.

Cost: Members free, visitors £8. No booking needed.

RUISLIP MANOR LIBRARY

BRIDGE FOR IMPROVERS

Every Thursday, 10am to 12.30pm

Players are invited to join a relaxed supportive group for a chat and a game of Acrol bridge.

Cost: Free.

No booking needed.

THEATRE AND CONCERTS

ICKENHAM UNITED REFORMED CHURCH

CHARITY CONCERT BY APOLLO MALE CHOIR

Saturday 23 November, 8pm

The choir will perform songs of many genres, including show tunes, light opera and popular music spanning five decades. The concert is in aid of Community Links between Ickenham and Rukiga charity, which funds education, work and health projects in Rukiga, Uganda.

Cost: £15 including refreshments.

To book, call Derek Hughes on 07793 727259 or email dereknarnie@hotmail.com.

BATTLE OF BRITAIN BUNKER

RAF NORTHOLT BAND

Thursday 5 December, 7pm to 8pm

Come along to the bunker for a musical performance by the wonderful Royal Air Force Northolt band.

Cost: Free.

To book, visit battleofbritainbunker.co.uk/whats-on.

WINSTON CHURCHILL THEATRE

BAND OF THE RAF REGIMENT CONCERT

Friday 6 December, 3pm to 5.30pm

The Royal Air Force Music Services Association will host its Esprit de Corps: Band of the RAF Regiment Concert.

Cost: £19.50, £10 for under-18s.

To book, visit discover.hillingdon.gov.uk/events.

ICKENHAM UNITED REFORMED CHURCH

HILLINGDON CHORAL SOCIETY'S CHRISTMAS CONCERT

Saturday 7 December, 7.30pm

Join Hillingdon Choral Society's Christmas carol concert for performances, including Vaughan Williams' *Fantasia on Christmas Carols* and Gordon Jacob's *The New-Born King*.

Cost: £15 adults, children free.

To book, email hillingdonchoralsociety@gmail.com or purchase on the door.

ST LAWRENCE CHURCH

HILLINGDON CHAMBER CHOIR

Saturday 7 December, 6pm

Hillingdon Chamber Choir (formerly Sine Nomine Singers) and soloists will be introducing its new conductor, David Gould. The

programme includes Bruckner's motets, excerpts from Mozart's *Coronation Mass*, Stanford Bible Songs, and Christmas carols.

Cost: £15.

To book, visit ticketsource.co.uk/sns or on the door.

ST MARGARET'S CHURCH

MUSIC FOR CHRISTMAS

Saturday 14 December, 3.30pm

Join Uxbridge Choral Society for some seasonal favourites, plus Rutter's *Magnificat*.

Cost: £12 (under-16s free).

To book, visit www.uxbridgechoralsociety.org.uk or on the door.

HARROW SCHOOL SPEECH ROOM

A CHRISTMAS CELEBRATION

Saturday 16 December, 5.30pm

Join Harrow Choral Society for a festive concert featuring carols, readings, brass ensemble performances, and audience participation carols. The event will be conducted by Music Director Sam Evans and accompanied by composer Paul Ayres. Special guest reader: Simon Williams (Justin Elliott in *The Archers*, Captain Bellamy in *Upstairs, Downstairs*).



Band of the RAF Regiment Concert

Cost: £25, under-18s £2 (ticket required).

To book, visit www.harrowchoral.org.uk or email boxoffice@harrowchoral.org.uk.

HEALTH AND FITNESS

WINSTON CHURCHILL THEATRE

DEMENTIA FRIENDLY DAYTIME DISCO

Tuesday 26 November, 1pm to 3pm

Friendly and fun sessions for those living with dementia, and their carer. Music provided by Brian Rowan, singing and playing songs from the 60s, 70s and 80s. Refreshments available to purchase from the theatre bar.

Cost: £5, plus one free carer ticket.

To book, visit discover.hillingdon.gov.uk/dementia-disco.

ST LAWRENCE CHURCH

YOGA WITH DINTA

Saturdays, 11am to midday

Dinta is fully qualified in Dru Yoga, which combines yoga postures with breath awareness which increases our sense of physical health, emotional wellbeing, mental clarity, and spiritual connection.

Have your say at the Older People's Assembly



Cost: £10 per class.

To book, email yogawithdinta@aol.co.uk or call 07870 981885.

FORUMS

CIVIC CENTRE, UXBRIDGE

ASSEMBLY FOR PEOPLE WITH DISABILITIES AND CARERS

Tuesday 10 December, 11am to 1pm

An opportunity for people with disabilities who live and/or work in Hillingdon and their carers to access information and have their say on how services are provided in the borough.

Cost: Free.

To book, call 01895 277038 or visit discover.hillingdon.gov.uk/disabilities-assembly.

CIVIC CENTRE, UXBRIDGE

OLDER PEOPLE'S ASSEMBLY

Thursday 12 December, 1.30pm to 3.30pm

Providing residents with an opportunity to discuss issues that affect older people.

Cost: Free.

To book, call 01895 277038 or visit discover.hillingdon.gov.uk/op-assembly.

VENUES

BATTLE OF BRITAIN BUNKER EXHIBITION AND VISITOR CENTRE

Wren Avenue, Uxbridge, UB10 0BE

CIVIC CENTRE

High Street, Uxbridge, UB8 1UW

CRANFORD PARK

The Parkway, TW5 9RZ

EASTCOTE HOUSE GARDENS

High Road, Eastcote, HA5 2QS

GUTTERIDGE WOODS

Lynhurst Crescent, Uxbridge, UB10 9EQ

HARROW SCHOOL SPEECH ROOM

Harrow-on-the-Hill, HA1 3HP

ICKENHAM UNITED REFORMED CHURCH

Swakeleys Road, Ickenham, UB10 8BE

MANOR FARM LIBRARY

Bury Street, Ruislip, HA4 7SU

NORTHWOOD METHODIST CHURCH HALL

30 Oaklands Gate, Northwood, HA6 3AA

OAK FARM LIBRARY

Sutton Court Road, Hillingdon, UB10 9PB

RUISLIP MANOR LIBRARY

Linden Avenue, Ruislip Manor, HA4 8TW

ST LAWRENCE CHURCH

Bridle Road, Eastcote, HA5 2SJ

ST MARGARET'S CHURCH

Windsor Street, Uxbridge, UB8 1AB

WOODLANDS CENTRE

Ruislip Lido, Reservoir Road, Ruislip, HA4 7TY

WINSTON CHURCHILL THEATRE

Pinn Way, Ruislip, HA4 7QL

If you wish to publicise an event, please email details to hillingdonpeople@hillingdon.gov.uk or send to Hillingdon People, 3E/01 Civic Centre, High Street, Uxbridge, UB8 1UW. Events are selected at the editor's discretion.

Looking to develop your skills and get into work?

INTRODUCING THE WEST LONDON

SKILLS & WORK FINDER

A searchable directory of opportunities to upskill, reskill, or move into a new job in West London.

1. Search our easy to use directory
2. Find opportunities and events
3. Connect with local providers

West London Alliance  Scan to unlock opportunities or visit wskillsandworkfinder.co.uk 

Are you looking for good quality furniture or electricals?
Or do you have some you want to donate?



For a free and friendly collection call your nearest branch - open 6 days a week

We recycle quality unwanted furniture and electricals. We provide paid employment and training to disadvantaged people and excellent quality furniture at fantastic prices to you. Visit our stores today!

trinity
HOME + PEOPLE + JOB

Uxbridge: 01895 256655
Hayes: 020 8797 9505
www.wearetrinity.org.uk
facebook.com/trinityfurniturestore

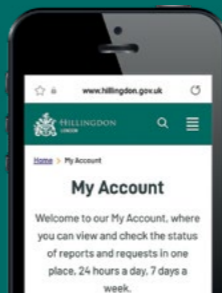
Need to contact us? Join the thousands choosing to do it online

It's quicker and easier to report issues to us online. By registering for a Hillingdon MyAccount, you can view and check the status of your reports and requests in one place.

Sign up today at www.hillingdon.gov.uk/myaccount.

You can:

- tell us about a problem in your road
- report fly-tipping or anti-social behaviour
- request recycling bags
- order a new Hillingdon First card and much more...



USEFUL CONTACTS

| | | | |
|---|---|---|---|
| <p>Adult education www.hillingdon.gov.uk/adultlearning</p> <p>Benefits www.hillingdon.gov.uk/benefits</p> <p>Births, deaths and ceremonies www.hillingdon.gov.uk/births-deaths-ceremonies</p> | <p>Businesses and licensing www.hillingdon.gov.uk/business</p> <p>Councillors, meetings and consultations www.hillingdon.gov.uk/council</p> <p>Council tax www.hillingdon.gov.uk/counciltax</p> | <p>Families' Information Service, fostering and adoption www.hillingdon.gov.uk/families</p> <p>Fraud Hotline www.hillingdon.gov.uk/report-fraud 0800 389 8313</p> <p>Health and wellbeing www.hillingdon.gov.uk/health</p> <p>Housing Services www.hillingdon.gov.uk/housing 01895 556666</p> <p>Hillingdon Social Care Direct (adults) (including TeleCareLine and Meals Service) www.hillingdon.gov.uk/socialcare 01895 556633</p> <p>Leisure (including parks, leisure centres, theatres and events) www.hillingdon.gov.uk/leisure</p> | <p>Libraries www.hillingdon.gov.uk/libraries</p> <p>Planning and Building Control www.hillingdon.gov.uk/planning</p> <p>School admissions www.hillingdon.gov.uk/schooladmissions</p> <p>Stronger Families Hub www.hillingdon.gov.uk/stronger-families</p> <p>Transport, roads and parking www.hillingdon.gov.uk/transport</p> |
|---|---|---|---|

Mental health support

Hillingdon Mind
01895 271559

Samaritans
116 123 (freephone)

Volunteer as a Community Panel Member

Make a difference by joining the council's Youth Justice Service as a Community Panel Member to help support children, parents/carers and victims of crime.

Volunteers work with the council's Youth Justice Officers to devise bespoke programmes of work to address children's offending behaviour and communicate the contents of the contract with children and their parents/carers.

Volunteers must be 18+, undergo an enhanced DBS check, and will receive training.

To apply, contact Sarah Abdulhadi:
[@sabdulhadi@hillington.gov.uk](mailto:sabdulhadi@hillington.gov.uk)



 www.hillingdon.gov.uk/volunteer-cpm

Learn Hillingdon Adult Community Education

Looking to start a new career?

We have a wide range of courses on offer to help you in your new career – from improving your essential skills to gaining a qualification. Enrol with us now.



SUPPORTED BY MAYOR OF LONDON

 www.hillingdon.gov.uk/adultlearning



Council updates straight to your phone

Follow our new WhatsApp Channel to stay up to date about council news, useful information, exciting events and safety updates.

Quick steps to get set up:

- 1 Scan the QR code
- 2 Click 'Follow' and unmute the bell icon to turn on notifications



 www.hillingdon.gov.uk

Going digital

The UK's old telephone lines are being replaced with a digital network by telephone providers, which may affect some of the services you use, including TeleCareLine.



Find out more at www.hillingdon.gov.uk/digital-switchover



 www.hillingdon.gov.uk

MAKE UXBRIDGE COLLEGE YOUR 1ST CHOICE

FIND YOUR CAREER PATH AT UXBRIDGE COLLEGE



LOOKING TO PROGRESS FROM SCHOOL, RETRAIN FOR A NEW CAREER OR REFRESH AND DEVELOP YOUR SKILLS?

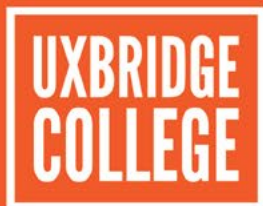
College is for everyone! It doesn't matter if you already have qualifications or not – we can talk to you about the options available and give you some advice to help with your future.

CONSIDERING COLLEGE? Our A-Level programme, vocational career-focused courses and T-Levels are the perfect option and the best alternative to 6th Form! Scan the QR code below to come along to our next Open Day.

HNCs & HNDs. Aim higher with cost-effective university-level undergraduate qualifications through our West London Institute of Technology. Courses available this January 2025.

PART-TIME COURSES. Gain a new skill or retrain with an evening or daytime course.

APPRENTICESHIPS. For adults and school leavers who want a qualification whilst working towards a new career. For our current vacancies please visit hruc.ac.uk/apprenticeships



Uxbridge College is part of Harrow, Richmond and Uxbridge Colleges (HRUC).



SCAN
HERE

Find out about
our open days

